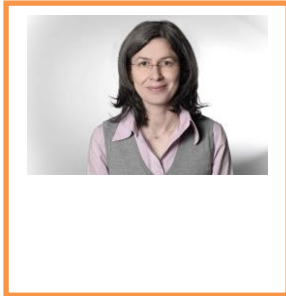


FACULTY PROFILE TEMPLATE



1. Dr. Christine Mady
2. Assistant Professor
3. 5091
4. Phone number: 09-218950, ext. 5091
5. Email address: christine.mady@ndu.edu.lb

6. Biography

Christine Mady is an Assistant Professor in Urban Planning, Urban Design, and Architecture at the FAAD. She also lectures graduate students in the Design Program. Christine holds a PhD in City and Regional Planning from Cardiff University, a Master's degree in Infrastructure Planning from Universität Stuttgart, and a Bachelor of Architecture from the American University in Beirut. She also received an International Postdoctoral Fellowship from the Urban Studies Foundation. She has been a guest lecturer at several European and Lebanese universities on topics related to urban planning. Her research interests include public space and property rights, culture-led urban regeneration, temporary urban uses, public health, urban planning, and infrastructure planning. Her research work further focuses on public space planning in post-conflict situations, particularly in relation to mitigating social divides, and has presented this topic in international urban planning conferences. Christine's interest in research is coupled with her professional practice experience in urban planning specifically in countries of the Middle East and North Africa region. She is also active as a referee in international urban planning journals, and member of scientific committees on international urban planning conferences.

7. Peer-reviewed Journals

International:

Mady, C. and Chettiparamb, A. (2016) Planning in the face of 'deep divisions': A view from Beirut, Lebanon. *PLANNING THEORY* (DOI: [10.1177/1473095216639087](https://doi.org/10.1177/1473095216639087))

Mady, C. (2015) *The Pedestrian and the City* by Carmen Hass Klau. New York, London: Routledge, 2015. *Urban Design International* (doi:10.1057/udi.2015.18)

Mady, C. (2015) *Leisurely Islam: Negotiating Geography and Morality in Shi'ite South Beirut* by Lara Deeb and Mona Harb. Princeton University Press: Princeton, NJ and Oxford, 2013. *Urban Studies* 52(8): 1545-1547.

Mady, C. (2015) Chiara Tornaghi and Sabine Knierbein (eds) *Public Space and Relational Perspectives: New Challenges for Architecture and Planning*, Routledge: London, 2014. *Urban Studies* 52(6): 1197-1199.

Mady, C. (2015) Nostalgia for a past: Beirut's shared open spaces. *On the w@terfront* 40(1): 7-22.

Mady, C. (2013) Social Entrepreneurs and Temporary Public Space Supply: *Urban Design and Planning*, Beirut, 166(6): pp. 349-357.

Mady, C. (2012) Diversity in Conviviality: Beirut's Temporary Public Spaces. *Open House International*. Special Issue June 37(2): pp. 63-71.

Mady, C. (2012) A Short Story of Beirut's Public Spaces. In: Maskineh C., Santini N., Scarnato, A. (eds). *AREA 120: Beirut*. 120 (February): pp. 36-37.

Mady, C., Higgs, G., and Peters, K. (2009). Review of Designing Sustainable Cities in the Developing World by Roger Zetter & Georgia Butina Watson (Eds) Aldershot, Burlington, Ashgate, 2006. *International Planning Studies* 14(1): pp. 99-107.

Mady, C. (2008). Review of What Makes a City? Planning for 'Quality of Place'. The Case of High-Speed Train Station Area Redevelopment by Jan Jacob Trip (Ed.) Amsterdam, IOS Press BV, Delft University Press, 2007. *International Planning Studies* 13(1): pp. 75-84.

8. Peer-reviewed Conference Proceedings
International:

Mady, C. (2016), **Stuck in a present-past moment: The everyday urban life of public spaces**” WSPC – Global Crisis, Planning, and Challenges to Spatial Justice in the North and in the South, Rio de Janeiro, Brazil (3-8 July)

Mady, C. (2015). *Temporary Public Spaces in Unstable Contexts: Practices. Lessons and Tools*’ AESOP: *Definite Space, Fuzzy Responsibility*, Prague, Czech Republic.

Mady, C. (2014). Public Space Supply in Post-Conflict Situations: The Case of Beirut. *AESOP – From Control to Co-Evolution Utrecht*, the Netherlands, 9-12 July.

El Asmar, J. P., and Mady, C. (2013). A Constructivist Approach to Design teaching at the Postgraduate Level: The Case of an Interdisciplinary Design Programme at FAAD, NDU, Lebanon. *3rd World Conference on Learning, Teaching and Educational Leadership – WCLTA 2012. Procedia Social and Behavioral Sciences* 93(2013): 531-538 Online: www.sciencedirect.com.

Mady, C. and El Asmar, J. P. (2012). Evaluation of a constructivist approach to Architectural Design Teaching: The Case of the International eVolo. *2nd World Conference on Educational Technology Researches*, Near East University, Nicosia, North Cyprus, 27-30 June.

Mady, C. (2011). The Socio-Economic Implications of Temporary Public Spaces in Beirut. *Special Session: Potentials and Challenges of Temporary land Uses. UK/Ireland Research Planning Conference*, Birmingham, UK, 12-14 September.

Mady, C. (2010). Void Matters: Temporary Urban Spaces in Beirut. *The 24th AESOP Conference*, Helsinki, Finland, 7-12 July.

Mady, C. (2008). When the Void Begins to Matter. *International Academic Group on Planning, Law and Property Rights Symposium II*, Warsaw: 13-15 February.

Mady, C. (2007). The Dynamics of Informal Public Space: The Beirut Perspective. *International Planning Conference*, Leuven, Belgium, 2-3 April.

Mady, C. (2006). The Dynamics of Public Space. *World Planning Schools Congress*, Mexico City 14 July.

Mady, C. (2005). A Bizarre Bazaar. *XXII UIA Congress*, Istanbul, Turkey, 4-7 July.

Mady, C. (2002). Shrinking Architecture. *XXI UIA Congress*, Berlin, Germany, 22-26 July.

Mady, C. (1996). Archaeology in Beirut City Centre. *Symposium on Post War Reconstruction at Aarhus Universitet*, Denmark.

9. Esteemed indicators

PMI Member #2438375

Board Member of MADA <http://www.mada.org.lb/>

Member of OEA, Beirut #21447