



TABLE OF CONTENTS

OFFICE OF INSTITUTIONAL RESEARCH AND ASSESSMENT (OIRA)	1
Message from the Director of Office of Institutional Research and Assessment	
Mission	2
Team Members	2
ABOUT NOTRE DAME UNIVERSITY-LOUAIZE: OVERVIEW	3
History and Heritage	3
Accreditation Status	3
Faculties and Lifelong Learning Center	4
Academics	4
Faculty	5
Enrollment	5
University Identity, Mission, Vision, and Values	6
University Agreements and International Memberships - Academic Year 2022-2023	9
Notre Dame University-Louaize Strategic Plan 2021-2026	15
Programs and Accreditation	16
ADMINISTRATION	19
Governing Bodies	20
University Presidents	22
Chief Administrative Officers of Notre Dame University-Louaize	22
Organizational Charts:	28
Institution	28
Office of Academic Affairs	29
Office of Administration	30
Office of Finance	31
Office of University Advancement	32

ADMISSIONS	33
Geographic Distribution of Lebanese High Schools with Applicants to NDU Campuses - Fall 2022	34
Demographic Data of NDU Applicants - Fall 2022	35
NDU Student Admission (Fall 2018-Fall 2022): Applied, Accepted, and Enrolled	38
NDU Student Admission by Level (Fall 2018-Fall 2022)	39
NDU Student Admission, Acceptance and Enrollment Rates by Level - Fall 2022	41
NDU Student Admission by Type of Student - Fall 2022	42
NDU First Time Entering Undergraduates by Faculty- Fall 2022	44
Graduate Admission by Faculty- Fall 2022	53
 ENROLLMENT	 54
Demographic Data of Enrolled NDU Students - Fall 2022	55
Enrollment by Campus (Fall 2018 - Fall 2022)	58
Enrollment by Campus and Level (Fall 2018 - Fall 2022)	59
Enrollment by Faculty and Level - Fall 2022	60
Enrollment by Program - Fall 2022	61
Enrollment for Degree Seeking and Non Degree Seeking by Headcount, Credit Hours and FTE - Fall 2022	69
Enrolled Degree Seeking Undergraduate Students on Dean's List - Fall 2022	70
Fall to Fall Retention - First Time Degree Seeking Students (2017-2022)	72
Fall to Fall Retention - First Time Degree Seeking Students by Faculty (2017-2022)	73
Graduation Rates: Undergraduate Cohorts of 2010-2014	74
 DEGREES CONFERRED	 75
Graduation Class of 2022	76
Degrees Conferred by Level - Annual Years 2018-2022	77
Degrees Conferred by Faculty - Annual Year 2022-2023	78
Graduation with Distinction - Annual Year 2022-2023	80
 NDU AND STUDENT FACILITIES	 82
NDU Physical Facilities - Academic Year 2022-2023	83
Centers and Institutes	85

Student Housing - AcademicYear 2022-2023	86
NDU Libraries	89
NDU Student Clubs by Campus - AcademicYear 2022-2023	86
Information Technology Resources - AcademicYear 2022-2023	91

ALUMNI 94

Alumni By Faculty and Campus	97
Alumni By Faculty and Gender	98
Alumni By Faculty and Level	99

FACULTY MEMBERS AND STAFF 100

Faculty Members by Status, Gender and Faculty - Fall 2022	101
Total Number of Credits Taught per Faculty by Full-Time and Part-Time Faculty Members - Fall 2022	102
Full-Time Faculty Members by Faculty and Rank - Fall 2022	103
Staff by Employment Type and Gender - Fall 2022	104

FINANCIAL INFORMATION 105

NDU Revenues and Expenditure Fiscal Year 2022-2023	106
--	-----



OFFICE OF INSTITUTIONAL RESEARCH AND ASSESSMENT (OIRA)

Message from the Director of Office of Institutional Research & Assessment

Dear Colleagues and Members of the Notre Dame University-Louaize Community,

I am delighted to present the University Fact book for the academic year 2022-2023, a comprehensive and insightful resource that provides a snapshot of our institution's progress, achievements, and trajectory.

As the Director of Institutional Research and Assessment, I am proud to be part of a dedicated team that continually gathers and analyzes data to support data-driven decision-making across our university. The Factbook serves as an indispensable tool for all stakeholders-faculty, staff, students, alumni, prospective students, and external partners, allowing us to better understand our institution's performance and contributions to society.

In the face of numerous challenges, our university has displayed resilience and adaptability, demonstrating our unwavering commitment to academic excellence and the pursuit of knowledge. The 2022-2023 Factbook highlights key indicators, trends, and milestones that features our collective efforts and achievements:

Academic Programs: Gain insights into our robust academic programs and accreditation status.

Admission, Enrollment and Demographics: Explore detailed information on first-time students, student enrollment, demographics, and geographic diversity, reflecting our commitment to inclusivity and global perspectives.

Student Success: Celebrate the achievements of our students, including graduation rates, honors and distinction rates.

Facilities and Resources: Learn about our campus infrastructure, library resources, and technology enhancements to support a dynamic learning environment.

Financial Overview: Gain transparency into our fiscal stewardship, including revenue sources, and expenditures.

I would like to express my sincere gratitude to all who have contributed to the compilation of this invaluable resource, specifically Mr. Anthony Daaboul, Officer-OIRA for his dedication, and Ms. Nathalie Kallassi Rechdan, Director of Applications and Software, for her continuous support.

For any additional information or inquiries regarding the data presented in this Fact Book, please contact Ms. Theresa Hajjar-Muça at the following email address: theresa@ndu.edu.lb

N.B. The census date of the figures presented in this Fact Book is August 31, 2023.

Mission

The Office of Institutional Research and Assessment is responsible for institutional research. This type of research gathers accurate and timely information to support proper decision making and institutional effectiveness efforts, assessment, and analyses, which is a continuing process aimed at understanding and improving student learning.

Team Members

Theresa Hajjar-Muça, MPH

Director, Office of Institutional Research and Assessment

T: +961 9 218 950 Ext: 2090 | D: +961 9 208 716

E: theresa@ndu.edu.lb

Anthony Daaboul, BS

Officer, Office of Institutional Research and Assessment

T: +961 9 218 950 Ext: 2970 | D: +961 9 208 224

E: tdaaboul@ndu.edu.lb



OVERVIEW

About Notre Dame University-Louaize

History and Heritage

Notre Dame University-Louaize (NDU) was established by the Maronite Order of the Blessed Virgin Mary (OMM). Since its foundation in 1695, the Order worked to promote education and to improve the lives of the communities it serves in Lebanon. In 1978, the Order started a new project. His Beatitude Cardinal Bechara Boutros Al-Rahi, Maronite Patriarch of Antioch and All the East, in cooperation with Beirut University College (BUC), founded the Louaize College for Higher Education (LCHE), the nucleus of today's NDU. The legal finalization of this project was the promulgation by the President of the Lebanese Republic of the decree number 4116 on August 14, 1987, granting the Order the right to operate an independent university.

Accreditation Status

Notre Dame University-Louaize (NDU), Lebanon's preeminent Catholic institution of higher education adopting the American model of liberal arts education, is accredited by the New England Commission of Higher Education (NECHE).

NECHE, founded in 1885 and recognized by the US Department of Education, is the oldest and most respected regional accrediting association in the US that continues to develop and regularly review standards for educational institutions across the board.

After years of hard work, NDU secured its initial accreditation in 2018 and was recently continued in accreditation for a full cycle until 2032. The achievement automatically positioned the University among the top universities in Lebanon and abroad and made it the first Catholic institution in the entire Middle East to hold such a prestigious recognition. Currently, the NECHE accredits a large number of colleges and universities in the

New England region, including several Ivy League universities as well as 12 institutions overseas.

After embarking on the rigorous accreditation process stages, NDU has consistently demonstrated a strong commitment to encourage its students to grow inward, outward, and upward by offering them exceptional education, exceptional value, and exceptional support while inspiring them to be truly exceptional.

For more information about the accreditation, kindly visit the [NECHE](https://www.neche.org) website.

New England Commission of Higher Education
3 Burlington Woods Drive, Suite 100, Burlington, MA 01803-4514
T: (781) 425 7785 | E: info@neche.org

Faculties and Division of Continuing Education

Notre Dame University-Louaize (NDU) comprises seven faculties in addition to a division of continuing education known as the Lifelong Learning Center (LLC). The seven faculties are: Ramez G. Chagoury Faculty of Architecture, Arts, and Design (FAAD), Faculty of Business Administration and Economics (FBAE), Faculty of Engineering (FE), Faculty of Humanities (FH), Faculty of Law and Political Science (FLPS), Faculty of Natural and Applied Sciences (FNAS), and Faculty of Nursing and Health Sciences (FNHS).

Academics

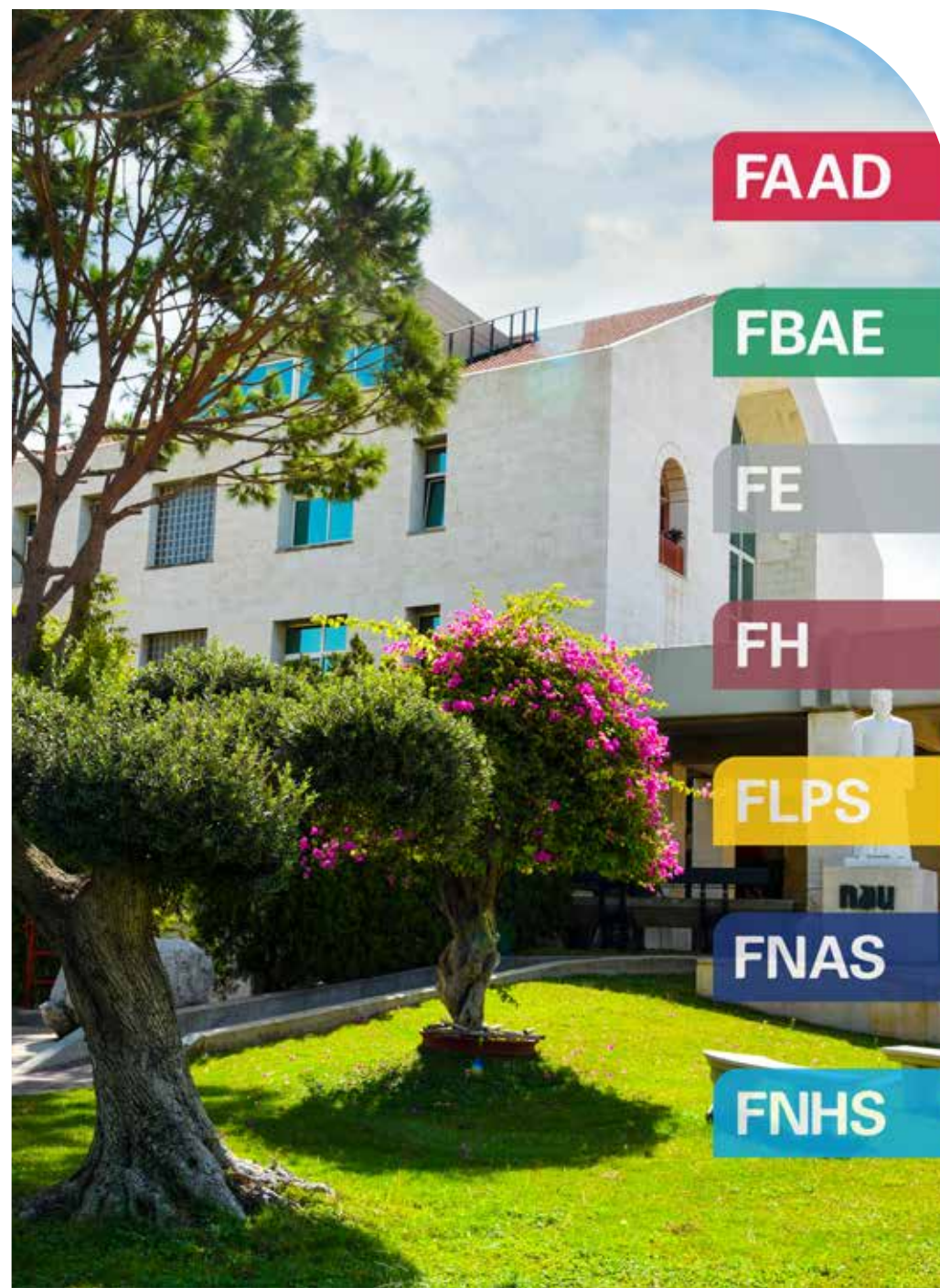
The University adopts the American liberal arts system of education. It confers bachelor's degrees in various areas in all its seven faculties including Bachelor of Architecture, Bachelor of Arts, Bachelor of Business Administration, Bachelor of Engineering, Bachelor of Hotel Management and Tourism, Bachelor of Law, Bachelor of Music and Musicology, Bachelor in Nursing, and Bachelor of Science.

In addition, various graduate programs are offered and lead to degrees such as Master of Arts, Master of Business Administration (MBA), and Master of Science.

All the degrees offered are recognized and accredited by the Lebanese Ministry of Education and Higher Education (MEHE).

67 undergraduate programs and 29 graduate programs were offered in Academic Year 2022-2023, in addition to 9 teaching diplomas and 1 teaching certificate.

NDU, in collaboration with SKILD, recently introduced the IDEAL Program, a program designed for students with learning difficulties who are unable to attend regular university programs.



Faculty

The total number of full-time and part-time faculty members during the Fall semester of 2022 totaled 193 and 270 respectively. Out of the full-time faculty members, 27 hold the rank of Professor, 79 hold the rank of Associate Professor, 41 hold the rank of Assistant Professor, 24 hold the rank of Senior Lecturer, 6 hold the rank of Lecturer, and 16 hold the rank of Lab/Senior Lab Instructor.

Enrollment

Student enrollment during the Fall semester of 2022 totaled 4185 students.





University Identity, Mission, Vision, and Values

Identity

Notre Dame University-Louaize (NDU) is a private, Lebanese non-profit Catholic institution of higher education, accredited by the New England Commission of Higher Education (NECHE), and adopts the American liberal arts system of higher education.

The religious affiliation of the University does not impose any sectarian obligations on faculty members, staff, or students. The cultural and spiritual heritage of the Maronite Order of the Blessed Virgin Mary (OMM) highlights a belief in a unified Lebanon, a belief in education as a means of protection against fanaticism and corruption, and a dedication to freedom of thought and expression. The University adopts such values and beliefs irrespective of color, creed, race, or gender and seeks to enhance these values through the liberal education it offers and the career preparation that caters to the real needs of Lebanon and the region.

Mission Statement

As a Catholic institution inspired by the cultural and spiritual heritage of the Maronite Order of the Blessed Virgin Mary (OMM), Notre Dame University-Louaize (NDU) seeks to provide comprehensive quality education that fosters excellence in scholarship, lifelong learning, enlightened citizenship, human solidarity, moral integrity, and belief in God.

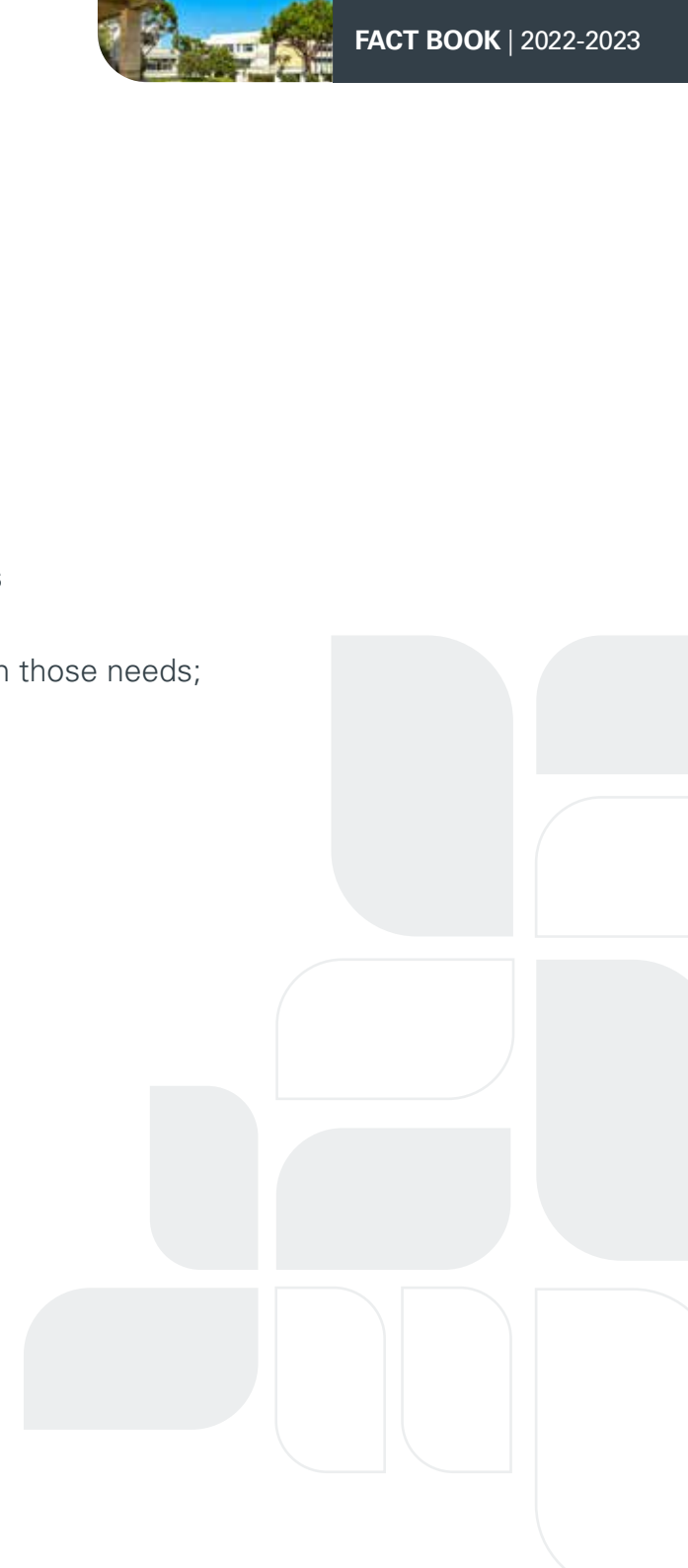
In designing its curricula, NDU is committed to the philosophy and standards of the American model of liberal arts education. Conceiving itself as an authentic academic community, NDU promotes diversity, respect for human dignity and rights, and concern for the common good. Its profound aspiration is to prepare its students to be future leaders who can exercise reason upon knowledge and shape a world of truth, justice, love, and freedom.



Vision

NDU's vision is to:

- Become the choice Catholic university in Lebanon, furnishing students with the finest faculty and comprehensive curriculum in the Maronite tradition;
- Provide a highly personalized academic experience to our graduate and undergraduate students;
- Integrate a strong, interdisciplinary, liberal arts core with degree-granting programs providing preparation for professional careers and graduate studies;
- Excel in selected specialty areas, including signature programs that augment reputation and serve as models for the delivery of educational development at the University;
- Foresee the changing needs with time and develop programs and utilize technologies consistent with those needs;
- Create and sustain a community in which all aspects of University life are a reflection of its values.



Values

As a Catholic university in the Maronite tradition, NDU is determined to practice the core values that respect humanity and the dignity of the individual, that help students on their life path of learning, and that allow them to discover their talents through cooperation while they look for truth, for individual empowerment, and for the enhancement of the world around them. Accordingly, they dedicate themselves to the following core values:



Faith

As a Catholic university, NDU highlights a strong belief in spiritual motivation and education as a vehicle for a better and more just society.



Excellence

In all activities of University life – teaching, scholarship, service, etc. - NDU strives to be a center of quality education.



Scholarship

To seek the truth, with a sense of discovery, through informed and rigorous scholarship, will place NDU among the top ranking regional universities.



Freedom

Of thought and expression; NDU commits itself to engage and enhance intellectual inquiry in the pursuit of truth through teaching students how to learn, how to think critically, how to conduct responsible research, and how to access and integrate information in preparation for career development and personal growth.



Integrity

Teaching, scholarship, and student service within the University community is characterized by intellectual honesty and a sense of personal morality.



Service

NDU is committed to serve not only its students, faculty, and employees, but also society at large.



Diversity

Empathy, tolerance, and respect for all people is essential to any University community. NDU encourages students to understand and appreciate the diversity of cultures which exist locally, nationally, and internationally. It also seeks to promote appreciation of diversity through an understanding of the impact of human beings on their environment.



Learning for Life

In the tradition of a Catholic liberal arts education, NDU commits itself to lifelong learning, encourages personal responsibility, develops spiritual values, and affirms a philosophy of life which actively supports global economic equity, social justice, and human rights.

University Agreements and International Memberships - Academic Year 2022-2023

NDU's international agreements are usually based upon a general memorandum of understanding, which stipulates five broad categories of possible cooperation:

1. Faculty, Staff and Student mobility programs
2. Study programs
3. Projects cooperation
4. Research cooperation
5. Organization of exhibitions, conferences, seminars, workshops and study tours

Academic Agreements with International Universities

Agrosup Dijon, France

American University of Cyprus

American University of Madaba

Babes-Bolyai University, Romania

Bauhaus-Universität Weimar

Catholic University of Applied Sciences Mainz, Germany

Catholic University in Erbil, Iraq

Catholic University of Liberia

Catholic University of Paris (ICP), France

Catholic University of Vendée (ICES)



Eastern Mediterranean University, North Cyprus
European Humanities University, Lithuania
L'Institute Catholique d'Etudes Superieures (ICES), France
Institut Catolique de Toulouse
Institut de Gestion Sociale Group for the American Business School (IGS-ABS Paris), France
Institute for Housing and Urban Development Studies, Erasmus University Rotterdam, Netherlands
National Astronomical Observatory of Japan, National Institutes of Natural Science (NAOJ)
IRCOM
Karlsruhe Institute of Technology
Leaders Institute
Madonna University, USA
Politecnico di Torino, Italy
"Universita e Nobil Collegio degli Orefici Gioiellieri e Argentieri dell'Alma, Italy"
Universität Salzburg, Austria
Universität Ulm, Faculty of Engineering, Germany
Universite Catholique de Lille
Universite Paris Nanterre
University College of Copenhagen, Denmark



University of Applied Sciences Worms, Germany
The University of Illinois
University of Lisbon
University of Minho, Portugal
University of Naples, Federico II, Italy
University of Ottawa, Canada
University of St. Thomas, Houston, Texas
The University of Siena

Membership in Organizations

ACCU	Association of Catholic Colleges and Universities, USA
UAOLB	Association of Universities in Lebanon
CB	The College Board, USA
CHEA	Council for Higher Education Accreditation
FUCE	Fédération des Universités Catholiques d'Europe et du Liban, Belgium
FIUC	Fédération Internationale des Universités Catholiques, France
IAU	International Association of Universities, France
UNSDG	United Nations Sustainable Development - UN Global Compact
HECD	Educational Development Center, HECD Project with USAID
AUF	Agence Universitaire de la Francophonie
CNRS	Conseil National de la Recherche Scientifique
AACRAO	The American Association of Collegiate Registrar's and Admission Officers, USA
SKILD	Smart Kids with individual Learning Differences
AESOP	Association of European Schools for Planning
EAAE	European Association for Architectural Education
AACSB	Association to Advance Collegiate Schools of Business
ACCA	Association of Chartered Certified Accountants
BMW AG	Bayerische Motoren Werke AG
MI	Ministry of Industry, Lebanon LIRA Program تجديد اتفاقية تعاون
	Lebanese Solar Energy Society
	Houmal Technology Park SAL, Houmal



GT	Growth Technology LLC a Nevada Limited Liability
IRD	Institut de Recherche pour le Développement
	Bioland
	IDEAL works GmbH
	Novelus Offshore SAL, Beirut
	SiliconCedars
	Mediterranean Network of Engineering and Management Schools (RMEIM Réseau Méditerranéen
	des Ecoles d'Ingénieurs, France)
IAA	International Advertising Association
CILECT	The International Association of Film and TV Schools
CISH	International Center for Human Sciences UNESCO
CLDH	The Lebanese Center for Human Rights
	Sader Foundation
	Kloudr
	Chedid
QOOT	Lebanese Agri-Food Cluster
UNIDO	United Nations Industrial Development Organization
	ITG Holding (Company)
	Park Innovation (Tech Hub)
	Teach for Lebanon (NGO)
	Talent IVY (Company)
	CMA/CGM (to be finalized)

Additional Memberships

	Beirut Marathon Association
	Europe's World
	Friedrich Nauman Foundation (Für Die Freiheit)
	Gibran National Committee
	Mr. Joseph Tawk
	Ministry of Culture
	SABIS/Admissions Online Application
UNESCO	United Nations Educational, Scientific and Cultural Organization
	UN Habitat
	World Patriarchal Maronite Foundation for Integral Development
	Riders' Rights
IRI	The Industrial Research Institute, Lebanon
	Lebanese Agricultural Research Institute Association for LARI
MEFOSA	MENA Food Safety Associates s.a.r.l.
	The Ministry of Industry
	The Ministry of Economy and Trade

Notre Dame University-Louaize Strategic Plan 2021-2026

In fall 2020, President Fr. Pierre Najem appointed a Strategic Plan Steering Committee (SPSC) to work on a new strategic plan following the plan of 2015-2020. The committee organized its work by dividing the tasks among the different subcommittees and finalized its report a year later.

The plan revolves around five pillars that were identified following a strict data collection process involving the entire NDU community and a mapping process to link the pillars to a detailed SWOT and stakeholders analyses. Each pillar was associated with a set of goals as follows:

1. Mission

Goal I.1: Nurture a culture of sustainability, inclusion, and citizenship to create the widest social impact.

Goal I.2: Foster shared governance, transparency, agility, and continuous improvement to proactively adapt to changes.

2. People

Goal II.1: Invest in our People and make NDU an attractive place of work, and research.

Goal II.2: Optimize university-students and university-alumni relationship to strengthen belonging.

3. Innovation

Goal III.1: Streamline innovative learning methods and continuously design differentiated programs to cater to the student aspirations and market needs and develop the community mindsets and competencies.

Goal III.2: Explore opportunities and invest in various endeavors with the internal and external community to create value.

4. Outreach

Goal IV.1: Increase NDU student enrolment through proper planning, targeted actions, and indicators.

Goal IV.2: Strengthen NDU image, reputation, and brand loyalty by positively influencing the perception and engagement among internal and external key stakeholders.

Goal IV.3: Adopt a purpose-oriented approach to extend and strengthen collaboration among academia, civil society, public and private sectors and cultivate strong local and international network engagement.

5. Resources

Goal V: Leverage NDU human and physical resources and strengthen and diversify its financial, technological, and physical infrastructure to ensure the university sustainability.

Programs and Accreditation

Accreditation Board for Engineering and Technology (ABET)

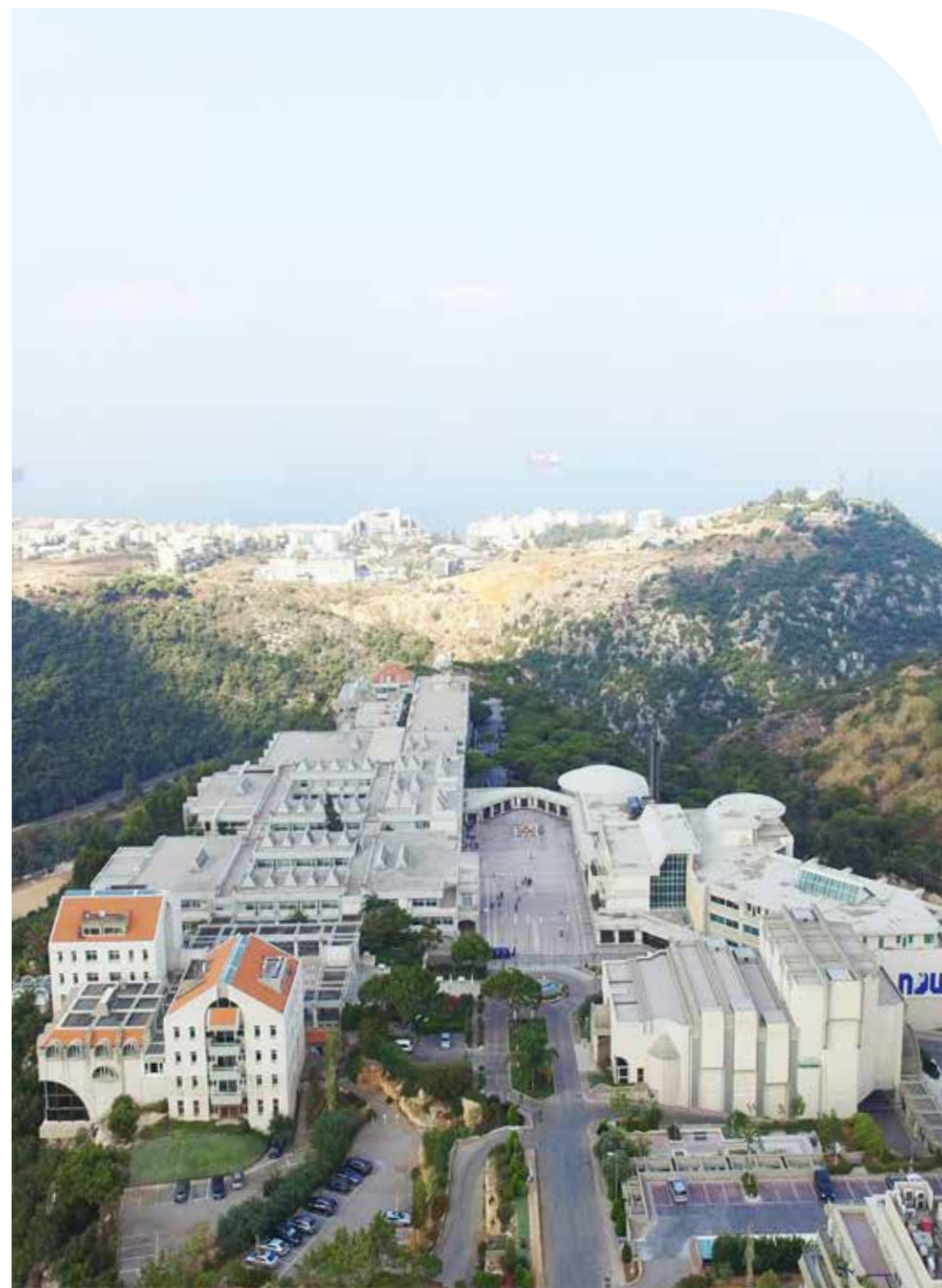
The Faculty of Engineering (FE) was officially accredited by the Engineering Accreditation Commission of ABET, the global accreditor of college and university programs in applied sciences, computing, engineering, and engineering technology, across the three campuses in 2016 and retroactive to Fall 2013. The programs that were accredited are the following: Civil Engineering, Computer and Communication Engineering, Electrical Engineering, and Mechanical Engineering. In 2022, ABET reaffirmed the FE's accreditation for a full cycle, a follow-up to the initial certification in 2016.

The Faculty of Natural and Applied Sciences (FNAS) was accredited by the Computing Accreditation Commission of ABET, across the three campuses in 2018 and retroactive to Fall 2016, for its Bachelor of Science program in Computer Science.

Association to Advance Collegiate Schools of Business (AACSB)

The Faculty of Business Administration and Economics (FBAE) received the official AACSB accreditation in Fall 2022, for all its programs, across all three campuses, excluding the Bachelor of Hotel Management. AACSB is one of the most prestigious business accreditation bodies worldwide. With this accreditation, the FBAE has now become part of the top 5% of the best business schools holding this esteemed recognition globally. This achievement is a testament to the FBAE's commitment to academic excellence and high-quality education.

Association of Chartered Certified Accountants (ACCA)





The Department of Accounting and Finance in the Faculty of Business Administration and Economics (FBAE) received formal accreditation from ACCA for its Bachelor of Business Administration in Accounting in 2018, and its Bachelor of Business Administration in Banking and Finance in 2021.

The International Advertising Association (IAA)

In 1999, the Department of Media Studies in the Faculty of Humanities (FH) received formal accreditation from the International Advertising Association (IAA) for its Bachelor of Arts in Advertising and Marketing. This accreditation distinguished NDU as the sole Lebanese university holding such recognition.

In 2023, the IAA reaffirmed its accreditation of NDU's Bachelor of Arts in Advertising and Marketing until 2026.

Centre International de Liaison des Ecoles de Cinéma et de Télévision (CILECT)

The Division of Audio Visual Arts in the Department of Media Studies at the Faculty of Humanities (FH) was recognized in 2017 as a member of CILECT, an academic recognition for the superior quality of its programs.

Commission Nationale de la Certification Professionnelle (CNCP)

The Bachelor of Architecture from the Department of Architecture at the Ramez G. Chagoury Faculty of Architecture, Arts, and Design (FAAD), was recognized as equivalent to the Diplôme d'État d'Architecte Français by CNCP in 2020.

National Architectural Accreditation Board (NAAB)

The Bachelor of Architecture from the Department of Architecture at the Ramez G. Chagoury Faculty of Architecture, Arts, and Design (FAAD), was deemed eligible for NAAB accreditation in Fall 2022 and is in the process of preparing its candidacy.





ADMINISTRATION

Governing Bodies

Supreme Council

- Most Reverend Abbot Pierre Najem, Superior General of the Maronite Order of the Blessed Virgin Mary
- Reverend Edmond Rizk
- Reverend Dominique Alam
- Reverend Miled Antoun
- Reverend Jean Mehanna

Board of Trustees

- H.E. Former Minister Dr. Ziyad Baroud, Chairperson
- Mr. Chucri Ronald Farra, Deputy Chairperson
- Ms. Mona Geha Kanaan, Secretary
- Mr. Farid Chedid, Treasurer
- H.E. Former Minister Selim Sayegh (MP), Chairperson, Committee of Education
- Mr. Selim Zeenni, Chairperson, Committee of Finance and Audit
- Mrs. Rose Choueiry, Chairperson, Committee of Advancement
- Reverend Bechara Khoury, University President (Ex Officio Member)
- Reverend Jihad Younes
- Reverend Pierre Ghsub
- Reverend Joseph Zgheib
- Reverend Walid Moussa





- Reverend Hanna Tayar
- Mr. John Moufarrej
- Ms. Hayat Frem
- H.E. Former Minister Violette Khairallah
- Mr. Nassib Shdeed
- Dr. Joseph Tarabay
- Mr. Philippe Ziade
- Dr. Fouad Zmokhol

Emeritus Board

- Dr. Francois Bassil



University Presidents

Name of the President	Year
Patriarch Bechara Rahi	1978 - 1984
Abbot Antoine Sfeir	1984 - 1987
Father Boutros Tarabay	1987 - 1993
Bishop Francois Eid	1993 - 1999
Father Boutros Tarabay	1999 - 2005
Father Walid Moussa	2005 - 2017
Father Pierre Najem	2017- 2021
Father Bechara Khoury	2021- Present

Chief Administrative Officers of Notre Dame University-Louaize

Function, Offices, and Centers (Fall 2022)	Name	Title
Board of Trustees	H.E. Former Minister Dr. Ziyad Baroud	Chairperson
Office of the President	Fr. Bechara Khoury	NDU President
Office of Internal Audit	Mr. Elie Safar	University Internal Auditor
Office of the Legal Services	Ms. Faten Youssef	University Legal Counsel
Campus Ministry	Fr. Yousef Boutros	University Chaplain General
Office of the Director of North Lebanon Campus (NLC)	Fr. Francois Akl	Campus Director

Office of the Director of Shouf Campus (SC)	Fr. Naji Khalil	Campus Director
School of Music and NDU Choir	Fr. Khalil Rahme	Director
Office of Human Resources	Ms. Cendrella Mjaes	Director
Office of Academic Affairs	Dr. Michel El Hayek	Vice President for Academic Affairs (VPAA)
Office of Academic Support	Dr. Simon Abou Jaoude	Assistant Vice President for Academic Support (AVPAS)
Office of Research and Graduate Studies	Dr. Ghazi Asmar	Assistant Vice President for Research and Graduate Studies (AVPRGS)
Office of Institutional Research and Assessment	Ms. Theresa Hajjar-Muça	Director
Office of International Relations	Dr. Jessica El Khoury	Director
Office of Grants	Ms. Rania Najem	Senior Officer
Office of the Registrar	Ms. Mirna Nehme	Registrar
Office of Admissions	Ms. Joyce Menassa	Director
Lifelong Learning Center	Dr. Lara Khabbaz	Director
Office of Student Affairs	Dr. Charbel Zgheib	Dean of Students
> Department of Financial Aid	Ms. Eliane Harfouche Khoury	Assistant Director
> Department of Social Security	Ms. Nisrine Souaid	Senior Officer
> Department of Counselling and Health	Dr. Rachid Succar	Students' Physician
> Department of Student Life	Ms. Reine El Khoury Gunstone	Senior Officer
> Student Housing	Mr. Paul Khoury	Assistant Director
> Department of Athletics	Mr. Elias Boutros	Head
> Department of Community Services and Awareness	Mr. Elias Fattouh	Senior Officer
> Department of Academic Advising (DAA)	Ms. Nayla Bassil	Head



Office of University Advancement	Dr. Antoine Farhat	Vice President for University Advancement
Office of Marketing	Dr. Lara Khabbaz	Director
> Department of Sponsorship	Ms. Jocelyne Issa	Senior Officer
Office of Communications	Mr. Andre Fahed	Director
> Department of Public Relations	N/A	N/A
> Department of Events and Management	Ms. Rania Zeidan	Assistant Director
> Department of Creative Design	Mr. Andre Fahed	Creative Director
NDU Career Center	Ms. Karla Sfeir	Head
Office of Development and Alumni Affairs	Ms. Nesrine Sfeir	Director
Office of Public Affairs and Protocol	Mr. Majed Bou Hadir	Director
> Department of Public Affairs	Ms. Suzane Saadeh	Senior Officer
NDU Libraries	Mr. Maroun El Rayess	Interim University Librarian
Research and Academic Engagement	Mr. Maroun El Rayess	Assistant University Librarian for Research and Academic Engagement
> Department of Access Services	N/A	N/A
> Department of Research and Instruction	Ms. Christiane Jaber	Librarian - Head
> Department of Academic Engagement	Ms. Pina Ghsoub	Specialist - Head
> Department of NDU Publications	Ms. Lydia Zgheib	Officer, Publishing
Collection Management	Ms. Charla Chebl	Assistant University Librarian for Collection Management
> Department of Cataloging	Ms. Christine Noujeim	Assistant Librarian
> Department of E-Resources and Acquisitions	Ms. Maya Tannous	Specialist - Head
> Department of Collection Development	Ms. Domingua Abboud	Senior Specialist - Head

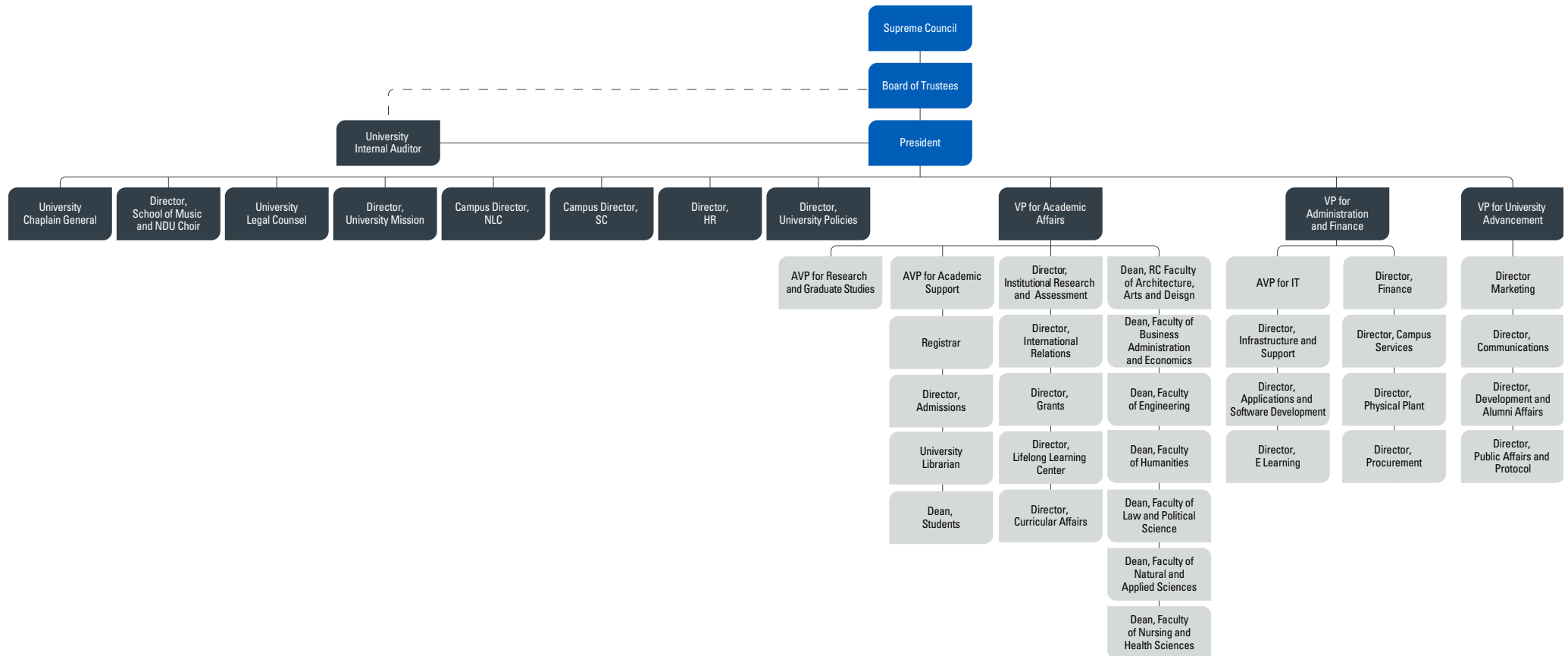
> Department of Special Collections	N/A	N/A
Library information Systems	Mr. Amine Moussa	Senior Specialist - Head
Institute of Lebanese Thought (ILT)	Mr. Sami Salameh	Senior Specialist
Office of Administration	Abbott Semaan Abou Abdou	Vice President for Administration & Finance (VPAF)
Office of Information Technology	Dr. Fawzi Baroud	Assistant Vice President for Information Technology (AVPIT)
> Department of Infrastructure and Support	Nazih Khalil	Director
> Department of Application and Software Development	Ms. Nathalie Kallasi Rechdan	Director
> Department of Network and Security	Mr. Fadi Khalil	Assistant Director
> Department of e-Learning	Dr. Danny Azzi	Director
Office of Campus Services	Mr. Sayed Ghossain	Director
Office of Procurement	Mr. Sayed Ghossain	Director
Office of Physical Plant	Mr. Pierre Azar	Director
> Department of Grounds Inspection	Mr. Joseph Bou Nassif	Senior Grounds Inspector
> Department of Maintenance	Mr. Elias Asaad	Senior Officer
> Department of Landscaping	Mr. Maher Ghostine	Assistant Director
Office of Finance	Abbott Semaan Abou Abdou	Vice President for Administration & Finance (VPAF)
Office of Finance	Mr. Gilbert El Hajj	Director
> Department of Budgeting	Dr. Cynthia Jabbour Sfeir	Senior Officer, Planning and Budgeting
Business Office	Ms. Rita El Saliby	Senior Officer

Faculties		
Ramez Chagoury Faculty of Architecture, Arts, and Design (FAAD)	Dr. Karen Bou-Jaoude Khoury	Interim Dean
> Department of Architecture	Dr. Hani Zgheib	Chairperson
> Department of Design	Mr. Salim Akl	Chairperson
> Department of Music	Ms. Dolcy Lawoun	Chairperson
Faculty of Business and Administration and Economics (FBAE)	Dr. Viviane Naimy	Dean
> Department of Accounting and Finance	Dr. Roy Khoueiry	Chairperson
> Department of Economics	Dr. Roy Khoueiry	Chairperson
> Department of Hospitality and Tourism Management	Ms. Mirna Kordab	Chairperson
> Department of Management and Marketing	Dr. Marwan Azouri	Chairperson
Faculty of Engineering (FE)	Dr. Jacques Harb	Dean
> Department of Civil and Environmental Engineering	Dr. Talal Salem	Chairperson
> Department of Electrical, Computer, and Communication Engineering	Dr. Elias Nassar	Chairperson
> Department of Mechanical Engineering	Dr. Charbel Bou Mosleh	Chairperson
> Center for Research on Sustainable Development (CROSD)	FE Faculty Members	N/A
Faculty of Humanities (FH)	Dr. Maria Bou Zeid	Interim Dean
> Department of English and Translation	Dr. Maya El Hajj	Chairperson
> Department of Media Studies	Dr. Joseph Hosni	Chairperson
> Division of Audio Visual Arts	Dr. Nicolas Khabbaz	Director

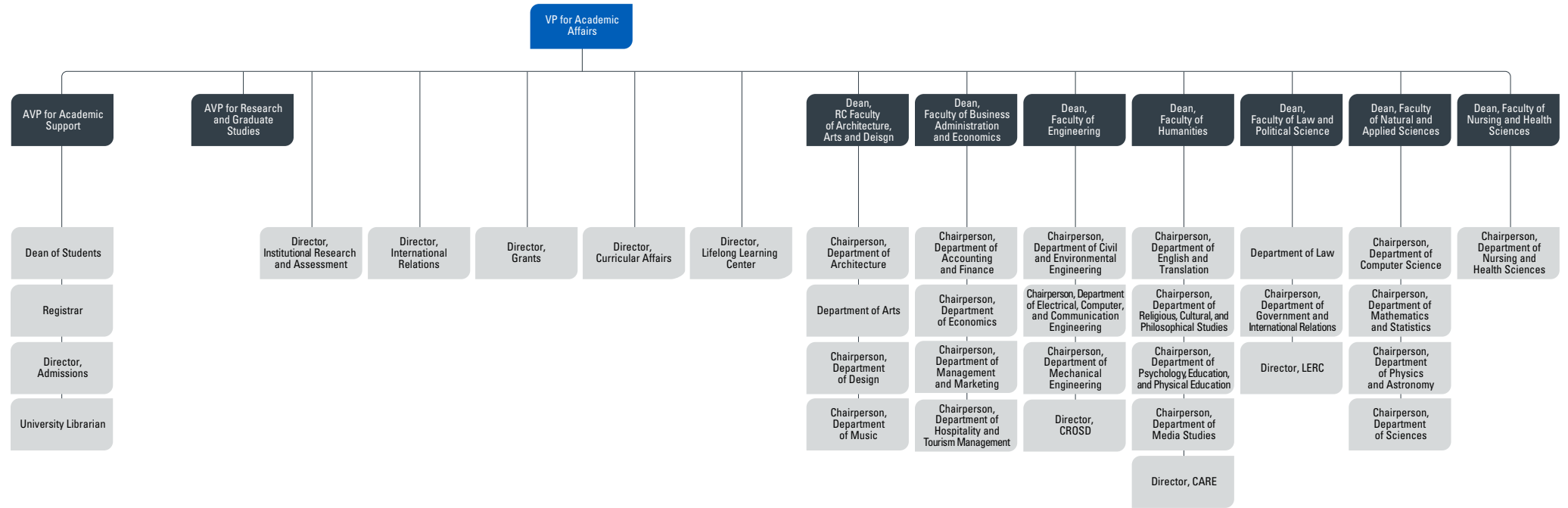
> Department of Psychology, Education, and Physical Education	Fr. Joseph Tannous	Chairperson
> Department of Religious, Cultural, and Philosophical Studies	Fr. Joseph Tannous	Chairperson
Center for Applied Research in Education (CARE)	Ms. Vera Jabbour	Officer
Benedict XVI	Dr. Edward Alam	Benedict XVI Endowed Chair
Faculty of Law and Political Science (FLPS)	Dr. Dany Samaha	Dean
> Department of Government and International Relations	Dr. Dany Ghsoub	Chairperson
> Department of Law	Dr. Dany Ghsoub	Chairperson
Lebanese Research Center for Diaspora and Migration Studies	Ms. Liliane Haddad	Senior Indexer and Archivist
Faculty of Natural and Applied Sciences (FNAS)	Dr. George M. Eid	Dean
> Department of Computer Science	Dr. Hoda Maalouf	Chairperson
> Department of Mathematics and Statistics	Dr. Roger Nakad	Chairperson
> Department of Physics and Astronomy	Dr. Bassem Sabra	Chairperson
> Department of Sciences	Dr. Pauline Aad	Chairperson
Faculty of Nursing and Health Services (FNHS)	Dr. Jessy El Hayek	Dean
> Department of Nursing and Health Sciences	Ms. Maya Abou Jaoude	Chairperson
NDU Alumni Association	Mr. Elie Hanna	President, NDU Alumni Association

Organizational Charts

Institution

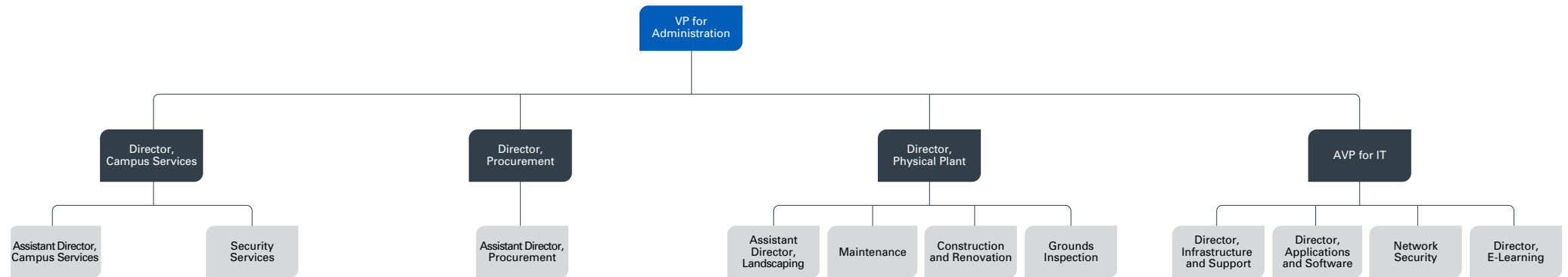


Office of Academic Affairs

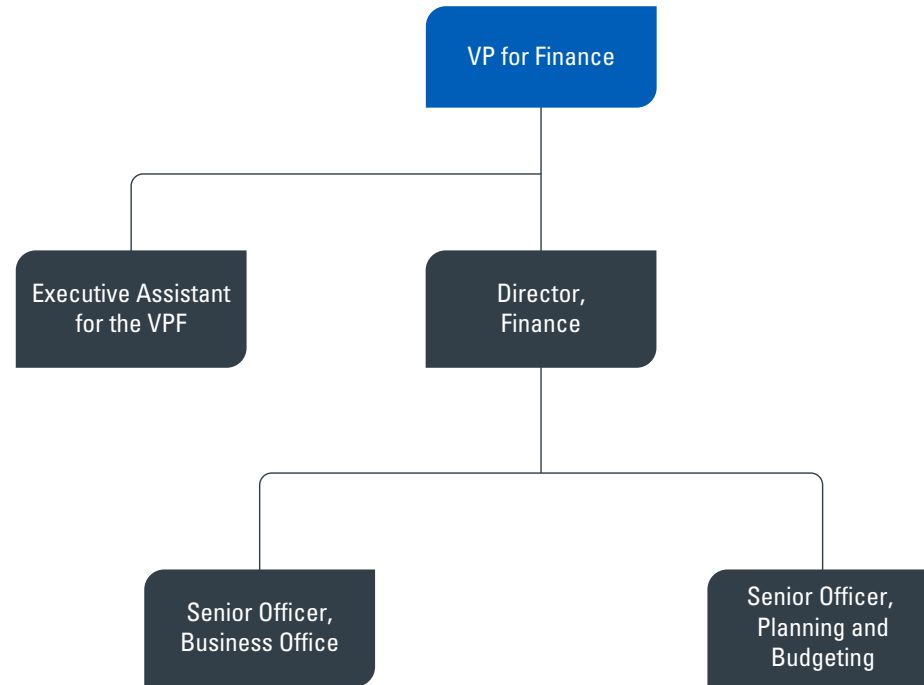




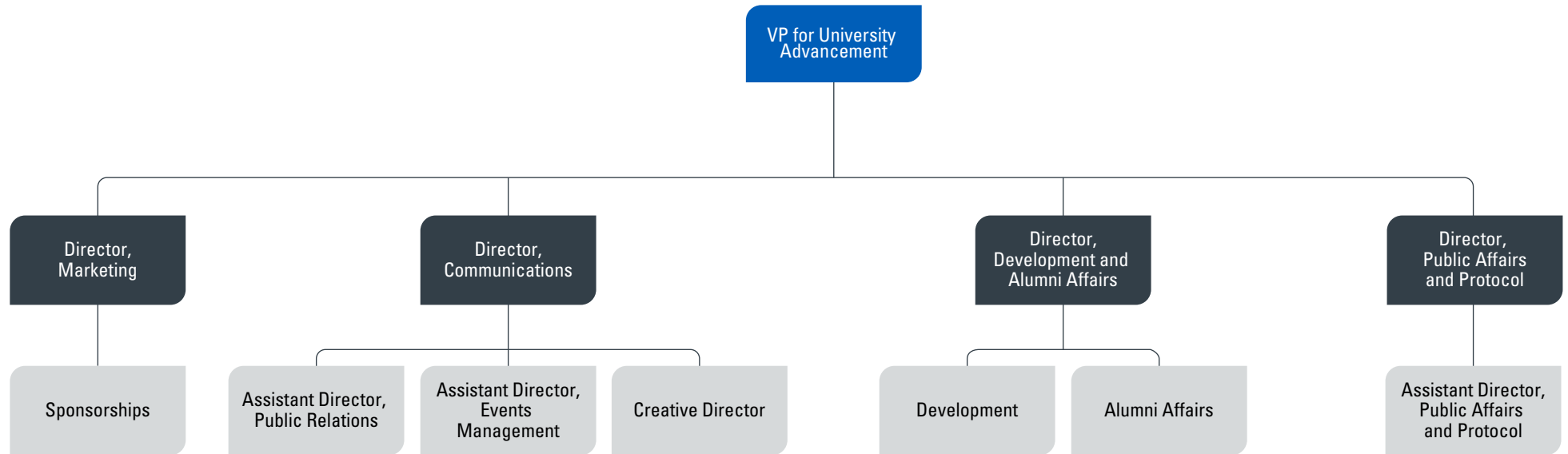
Office of Administration



Office of Finance



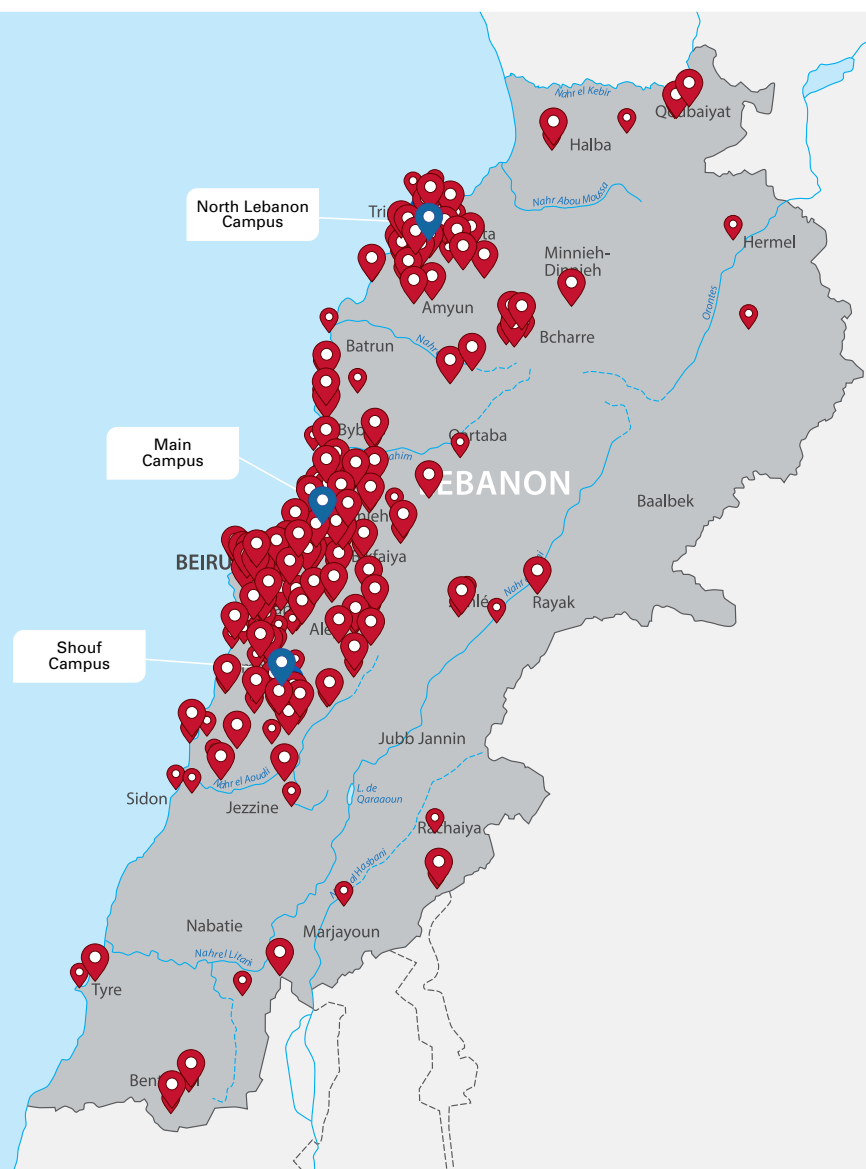
Office of University Advancement





ADMISSIONS

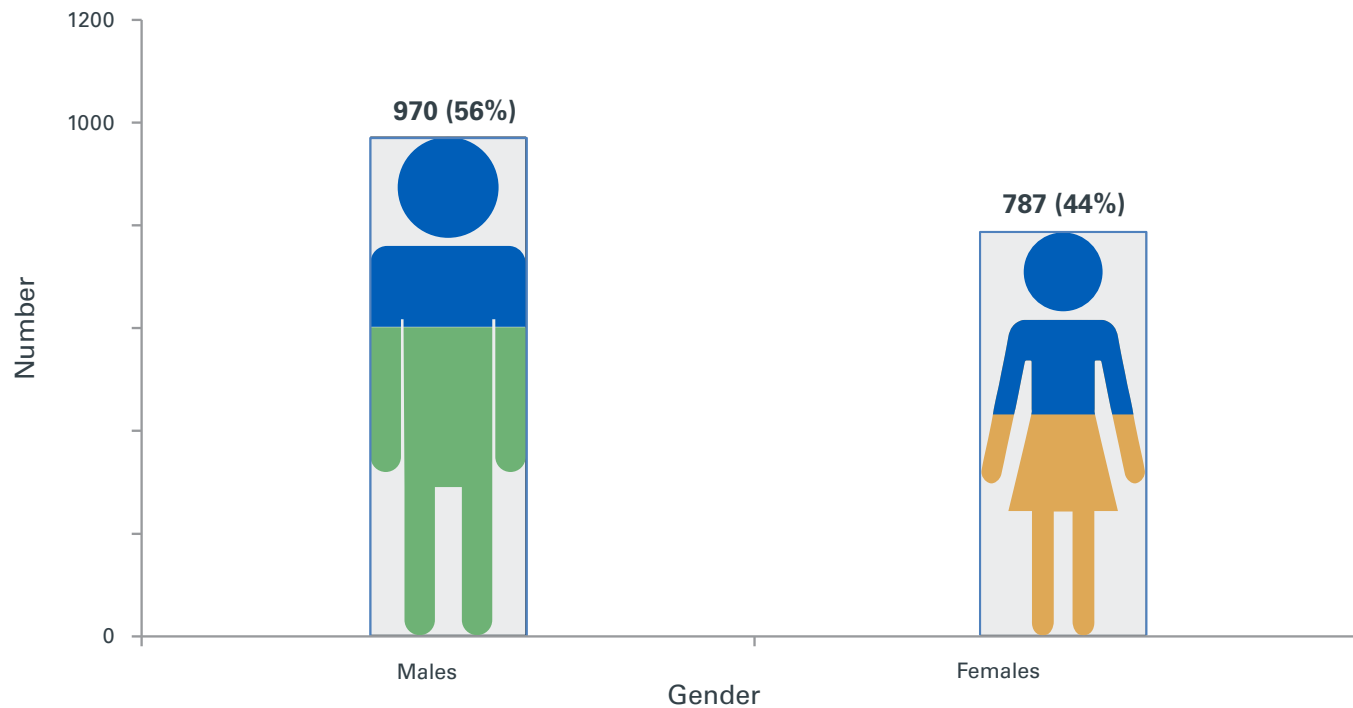
Geographic Distribution of Lebanese High Schools with Applicants to NDU Campuses - Fall 2022



Demographic Data of NDU Applicants - Fall 2022

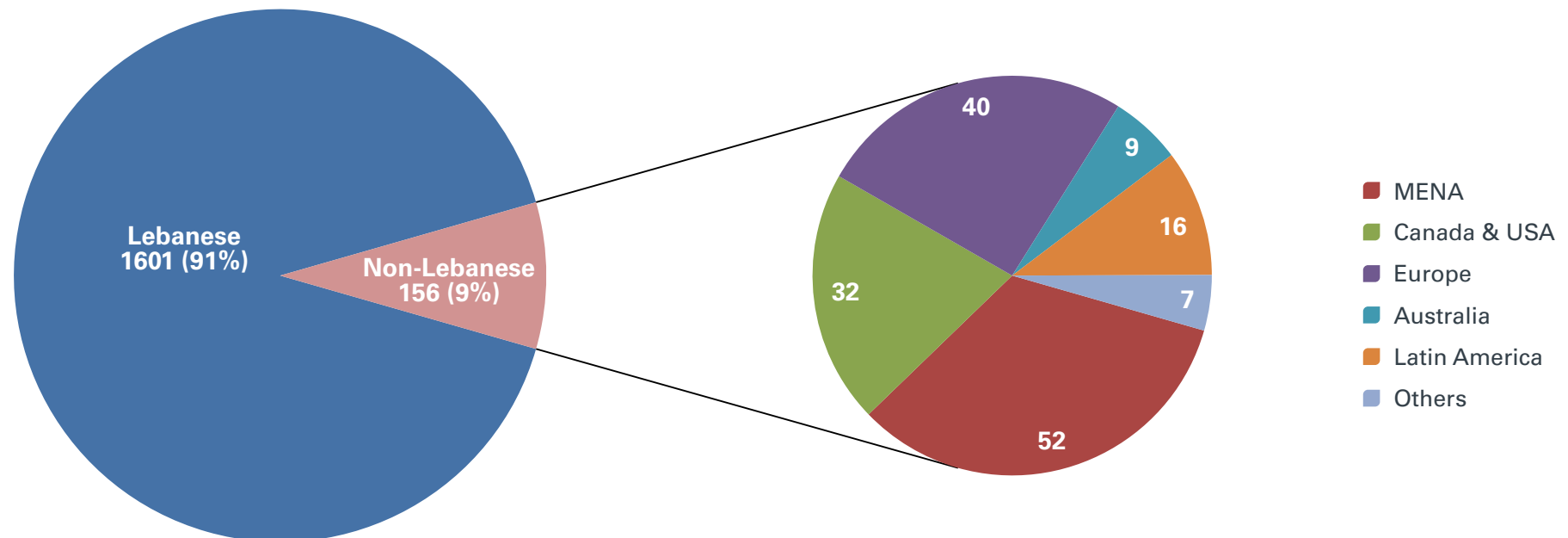
NDU Applicants by Level and Gender - Fall 2022

Applicant Level	Males		Females		Total
	N	%	N	%	
Freshman	77	55%	62	45%	139
Undergraduate	842	56%	652	44%	1494
Graduate	47	43%	63	57%	110
Teaching Diploma	0	0%	5	100%	5
IDEAL	4	44%	5	56%	9
Total	970	55%	787	45%	1757



NDU Applicants by Level and Nationality - Fall 2022

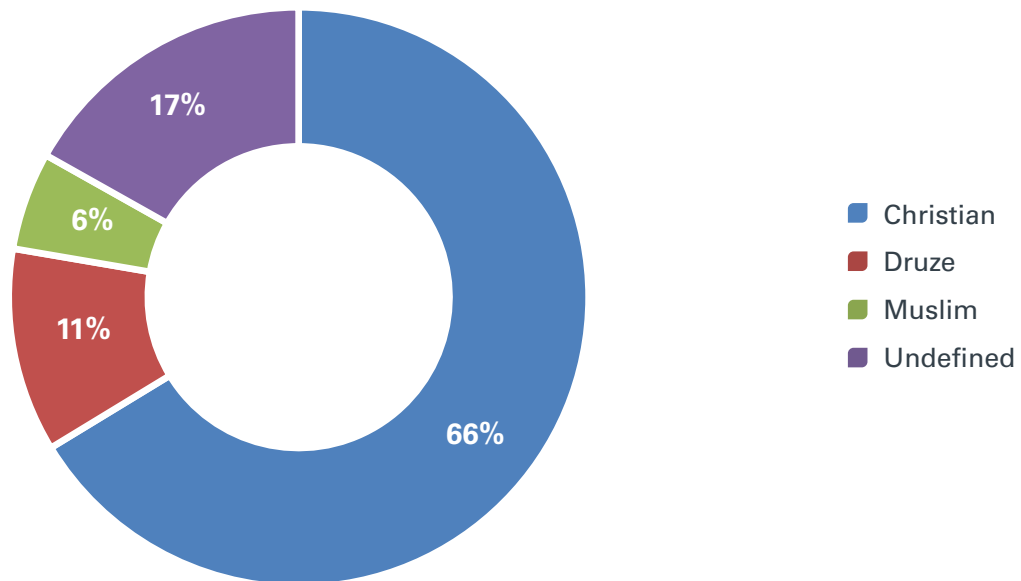
Applicant Level	Lebanon		MENA		Canada & USA		Latin America		Europe		Australia		Others		Total
	N	%	N	%	N	%	N	%	N	%	N	%	N	%	
Freshman	79	56.83%	14	10.07%	14	10.07%	10	7.19%	12	8.63%	5	3.60%	5	3.60%	139
Undergraduate	1410	94.38%	32	2.14%	15	1.00%	5	0.33%	27	1.81%	3	0.20%	2	0.13%	1494
Graduate	100	90.91%	6	5.45%	1	0.91%	1	0.91%	1	0.91%	1	0.91%	0	0.00%	110
Teaching Diploma	3	60.00%	0	0.00%	2	40.00%	0	0.00%	0	0.00%	0	0.00%	0	0.00%	5
IDEAL	9	100.00%	0	0.00%	0	0.00%	0	0.00%	0	0.00%	0	0.00%	0	0.00%	9
Total	1601	91.12%	52	2.96%	32	1.82%	16	0.91%	40	2.28%	9	0.51%	7	0.40%	1757





NDU Applicants by Religion - Fall 2022

Applicants	Religion	
	N	%
Christian	1165	66%
Druze	200	11%
Moslem	96	5%
Undefined	296	17%
Total	1757	100%

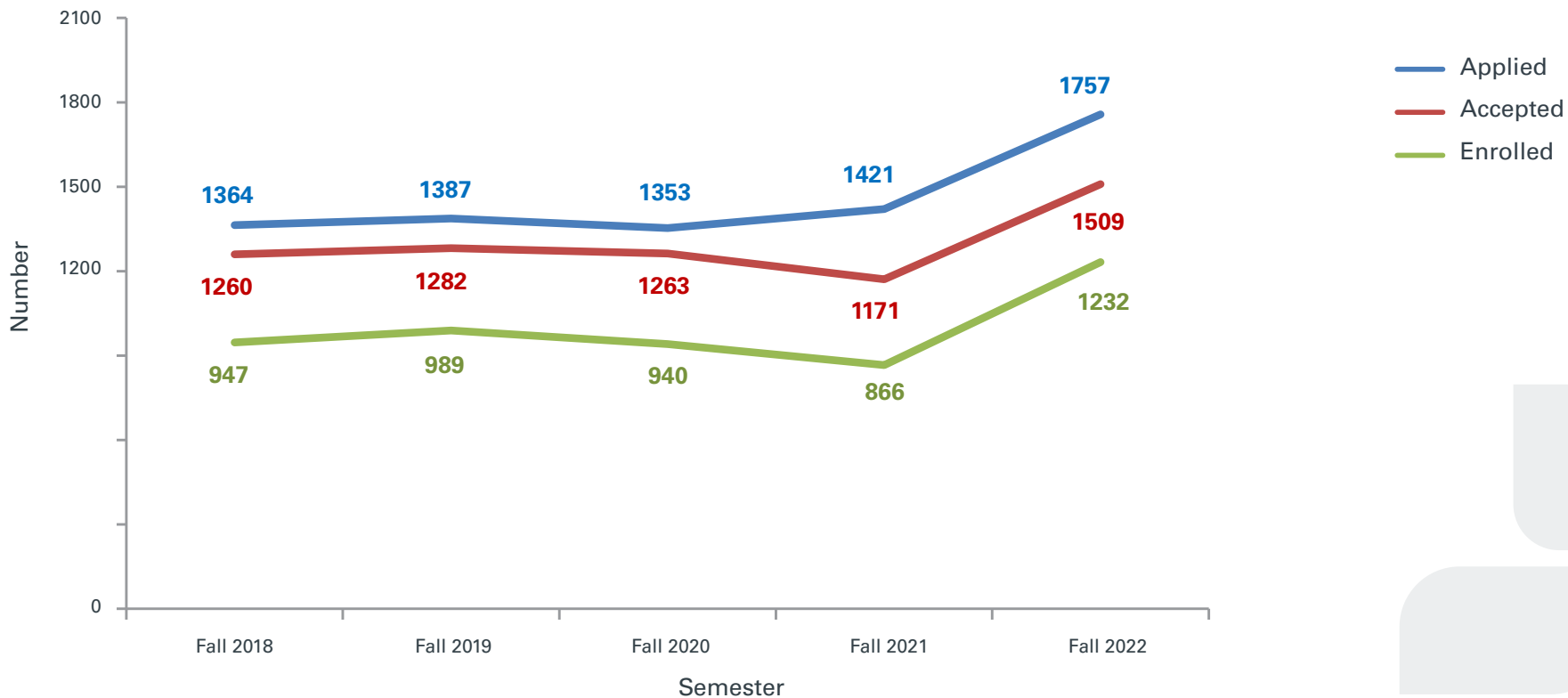




NDU Student Admission (Fall 2018-Fall 2022): Applied, Accepted, and Enrolled

Semester	Fall 2018	Fall 2019	Fall 2020	Fall 2021	Fall 2022
Applied	1364	1387	1353	1421	1757
Accepted	1260	1282	1263	1171	1509
Enrolled	947	989	940	866	1232

N.B. Students are counted twice when enrolled in two levels



NDU Student Admission by Level (Fall 2018-Fall 2022)

Undergraduate-Freshman

Semester	Fall 2018	Fall 2019	Fall 2020	Fall 2021	Fall 2022
Applied	157	145	105	77	131
Accepted	136	125	93	60	107
Enrolled	109	106	66	52	101

Undergraduate-Sophomore

Semester	Fall 2018	Fall 2019	Fall 2020	Fall 2021	Fall 2022
Applied	1053	1100	1114	1155	1429
Accepted	980	1023	1052	952	1247
Enrolled	721	773	777	693	1007

Undergraduate-Transfer

Semester	Fall 2018	Fall 2019	Fall 2020	Fall 2021	Fall 2022
Applied	33	29	40	34	73
Accepted	28	25	29	21	44
Enrolled	21	23	22	19	36



Teaching Diploma

Semester	Fall 2018	Fall 2019	Fall 2020	Fall 2021	Fall 2022
Applied	4	3	6	4	5
Accepted	4	3	6	2	5
Enrolled	4	3	5	2	5

Graduate

Semester	Fall 2018	Fall 2019	Fall 2020	Fall 2021	Fall 2022
Applied	117	110	88	151	110
Accepted	112	106	83	136	97
Enrolled	92	84	70	100	74

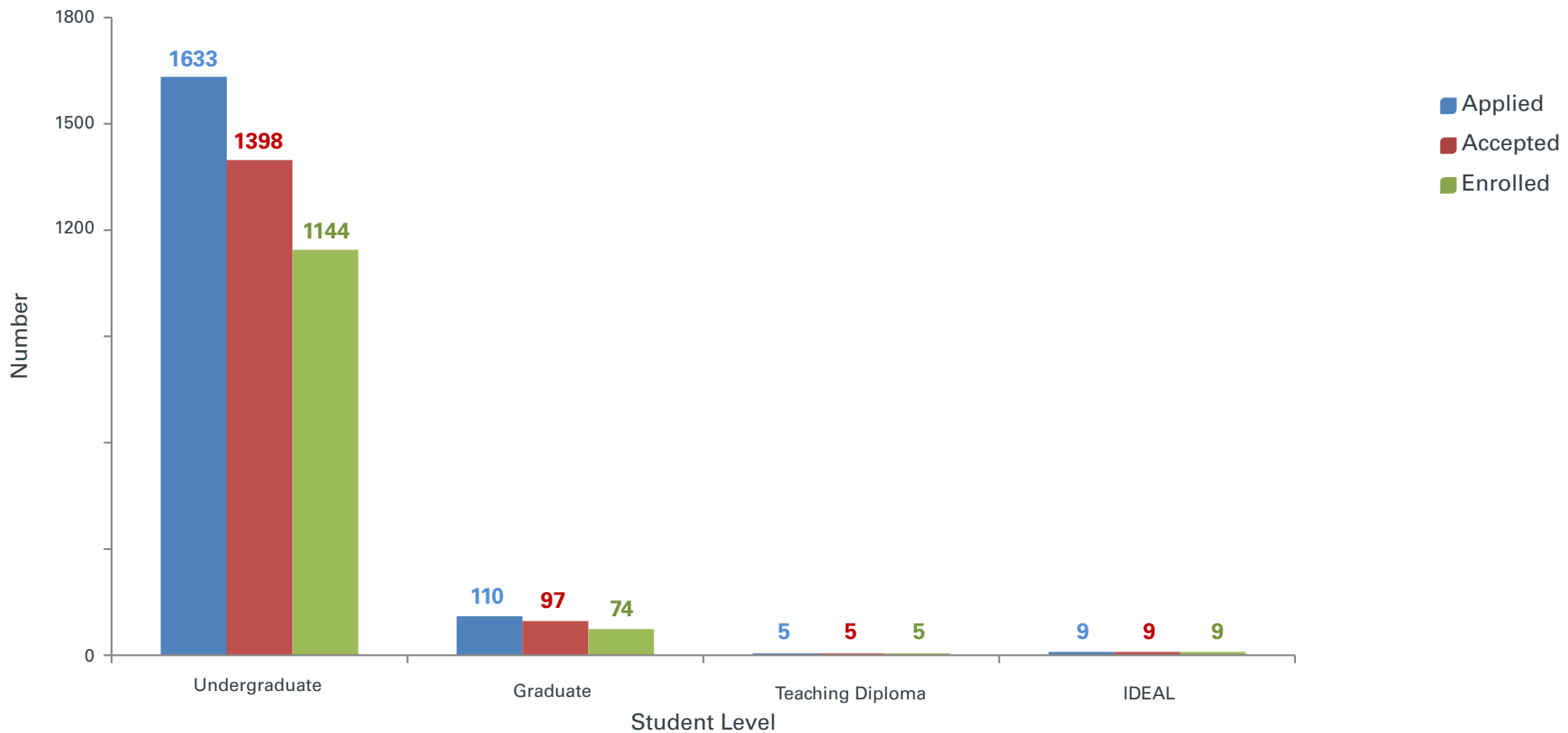
IDEAL

Semester	Fall 2022
Applied	9
Accepted	9
Enrolled	9



NDU Student Admission, Acceptance and Enrollment Rates by Level - Fall 2022

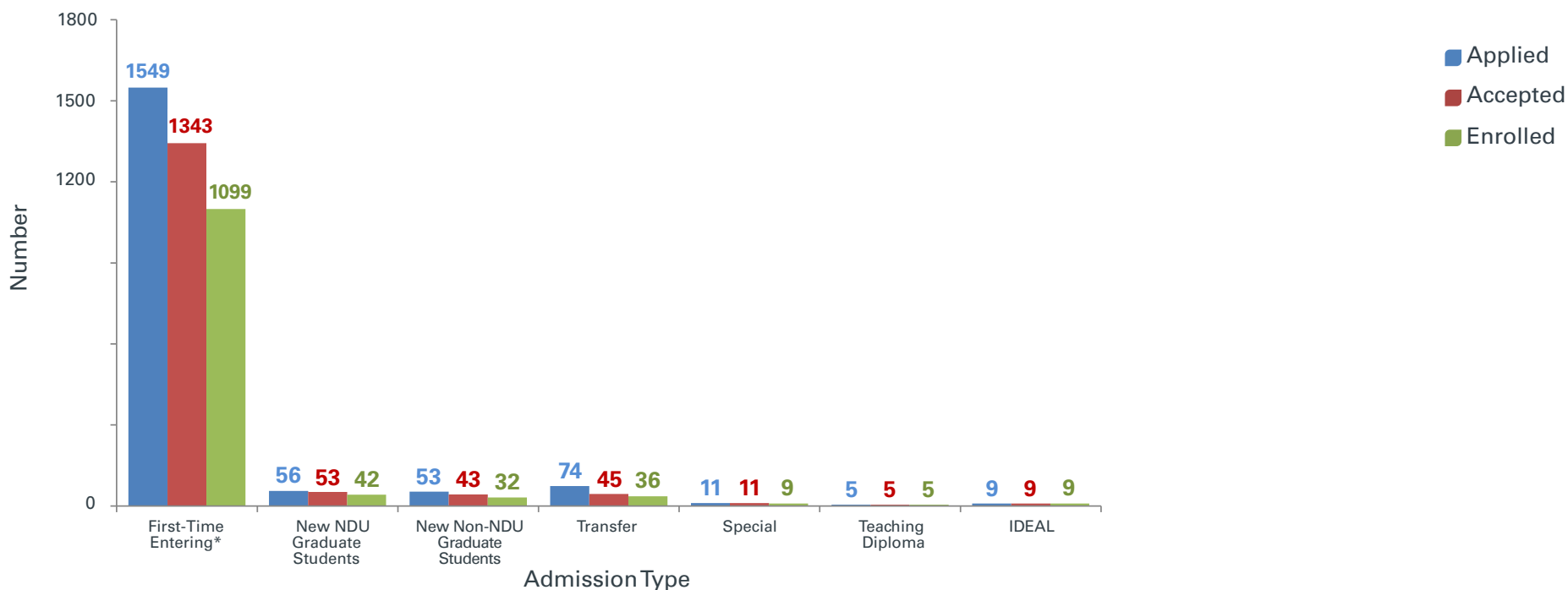
	Applied	Accepted	Enrolled	Acceptance Rate	Enrollment Rate
Undergraduate	1633	1398	1144	86%	82%
Graduate	110	97	74	88%	76%
Teaching Diploma	5	5	5	100%	100%
IDEAL	9	9	9	100%	100%
Total	1757	1509	1232	86%	82%



NDU Student Admission by Type of Student - Fall 2022

	Applied	Accepted	Enrolled	Acceptance Rate	Enrollment Rate
First-Time Entering*	1549	1343	1099	87%	82%
New NDU Graduate Students	56	53	42	95%	79%
New Non-NDU Graduate Students	53	43	32	81%	74%
Transfer	74	45	36	61%	80%
Special	11	11	9	100%	82%
Teaching Diploma	5	5	5	100%	100%
IDEAL	9	9	9	100%	100%
Total	1757	1509	1232	86%	82%

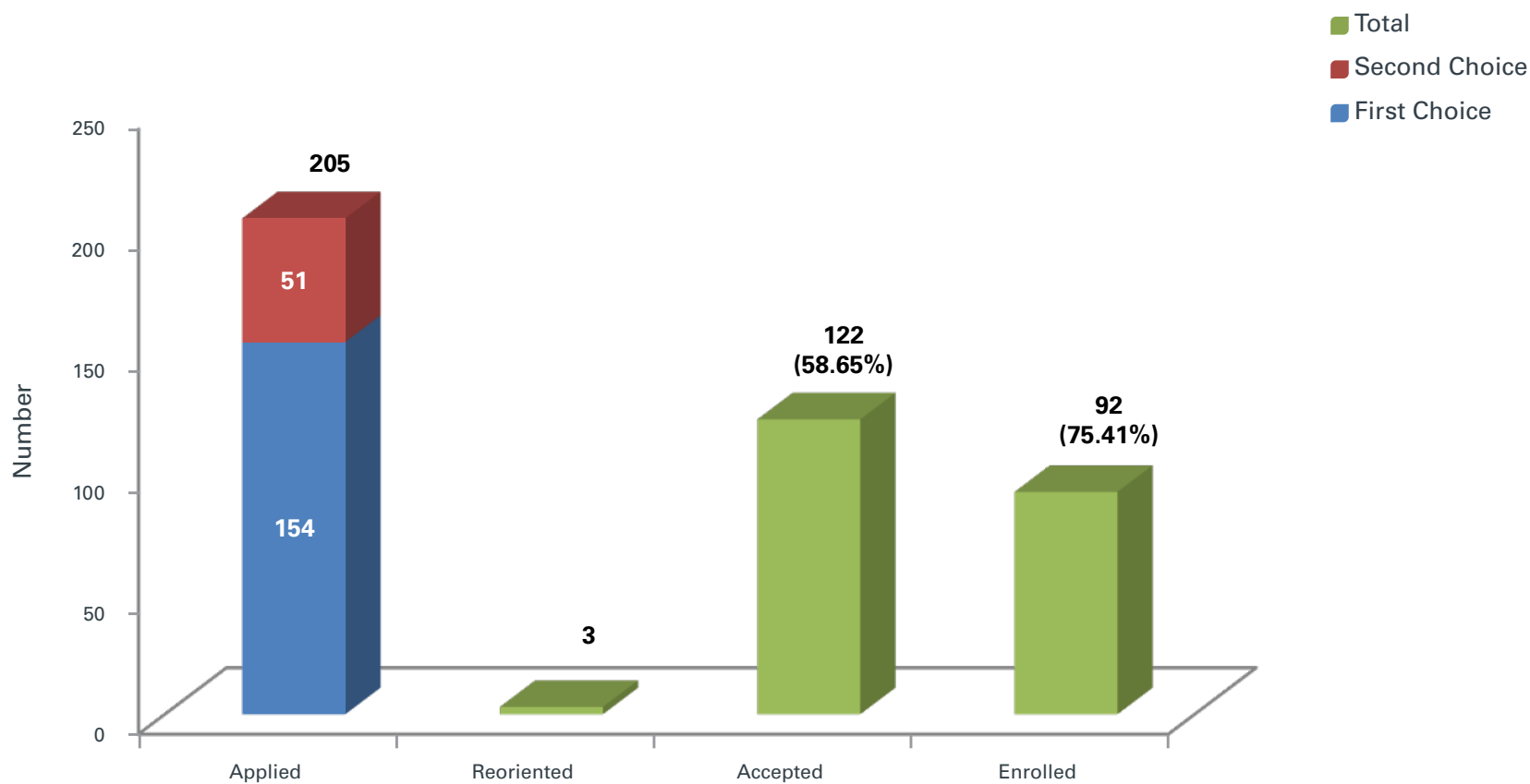
*First-Time Entering includes freshman and sophomore students registered post-secondary for the first time at the university.



NDU First Time Entering Undergraduates by Faculty - Fall 2022

RAMEZ G. CHAGOURY
FACULTY OF
ARCHITECTURE,
ARTS & DESIGN

FAAD

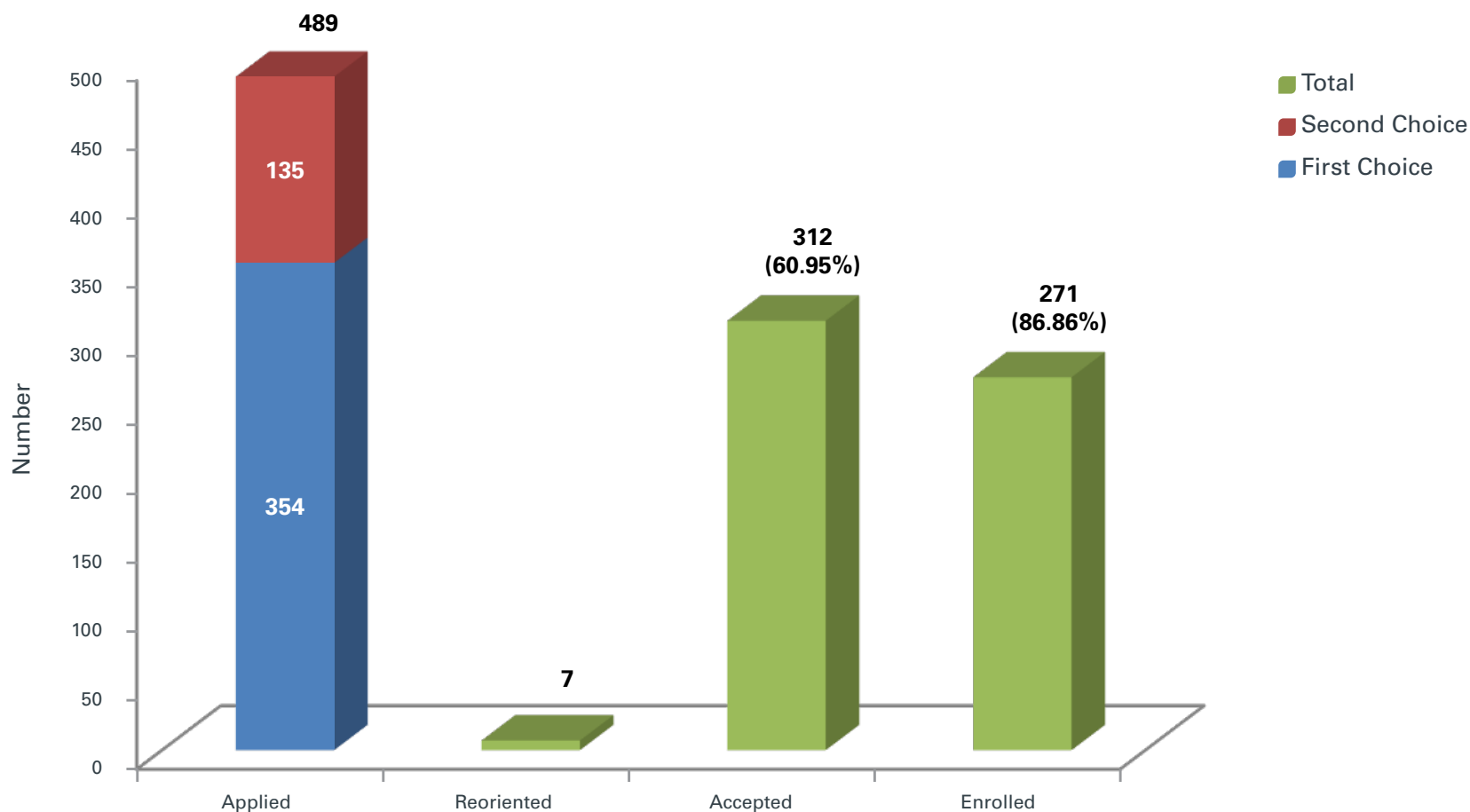


N.B. % Accepted is out of Total Applied and Reoriented
% Enrolled is out of Total Accepted

NDU First Time Entering Undergraduates by Faculty - Fall 2022

FACULTY OF
BUSINESS
ADMINISTRATION
& ECONOMICS

FBAE

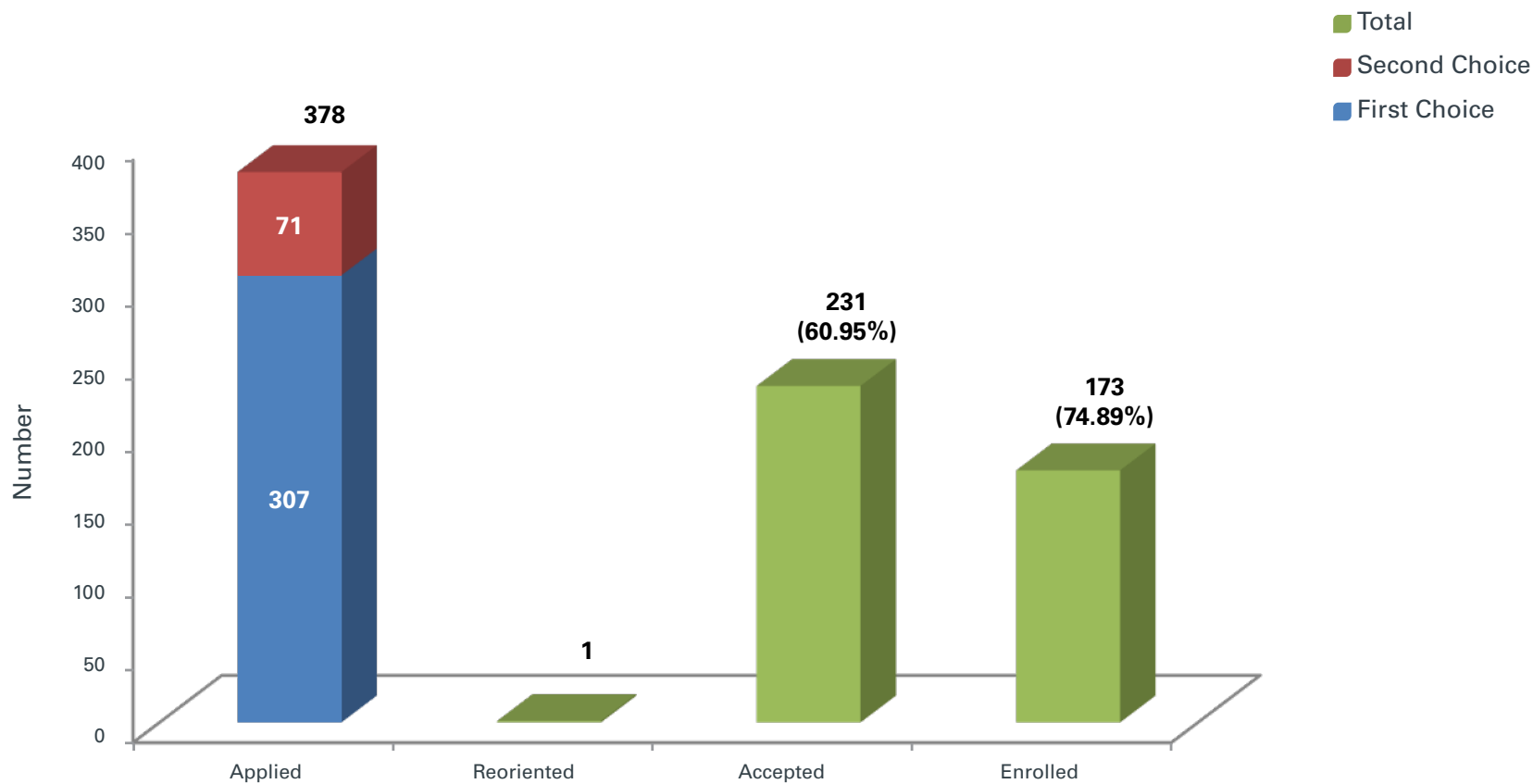


N.B. % Accepted is out of Total Applied and Reoriented
% Enrolled is out of Total Accepted

NDU First Time Entering Undergraduates by Faculty - Fall 2022

FACULTY OF
ENGINEERING

FE

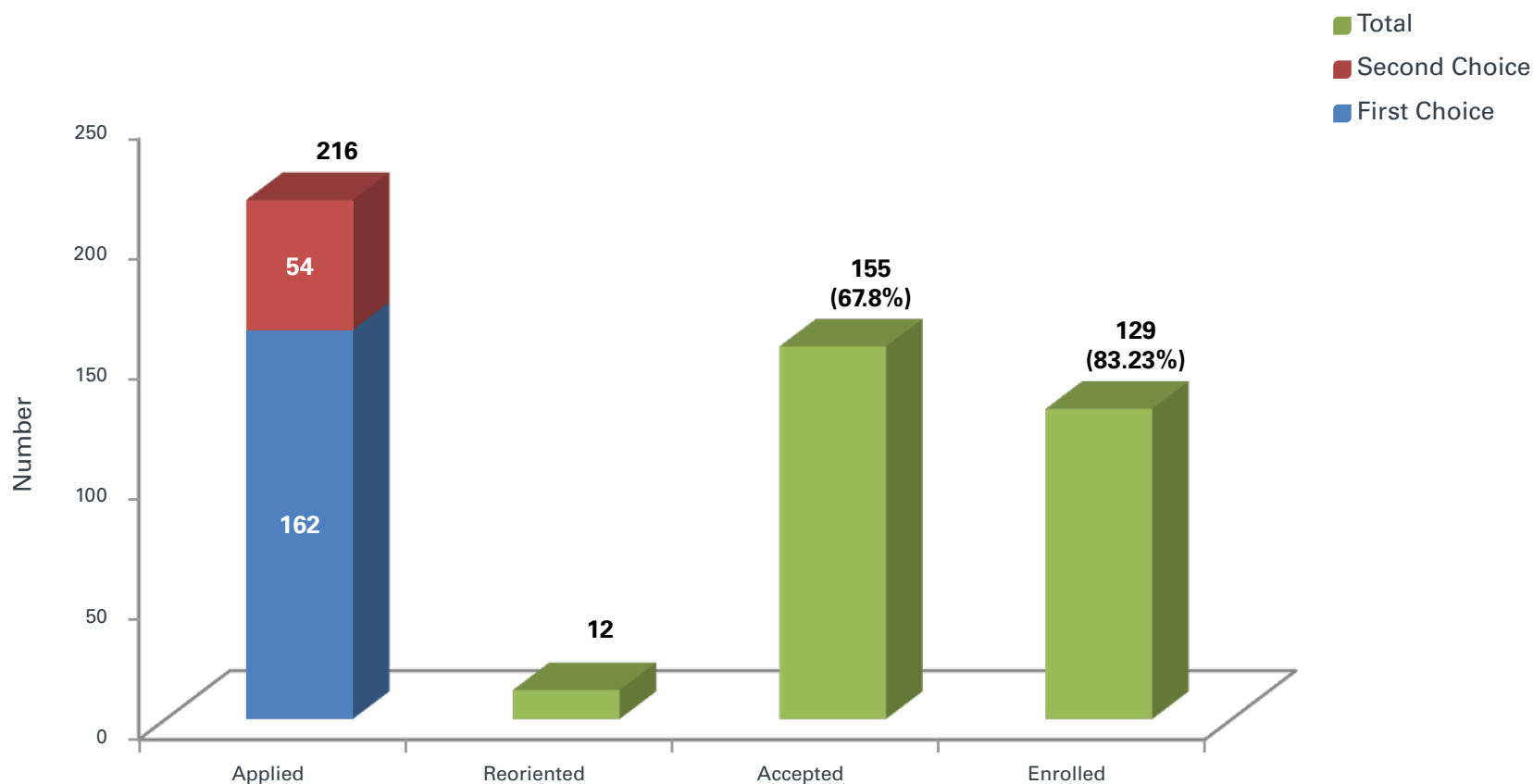


N.B. % Accepted is out of Total Applied and Reoriented
% Enrolled is out of Total Accepted

NDU First Time Entering Undergraduates by Faculty - Fall 2022

FACULTY OF
HUMANITIES

FH

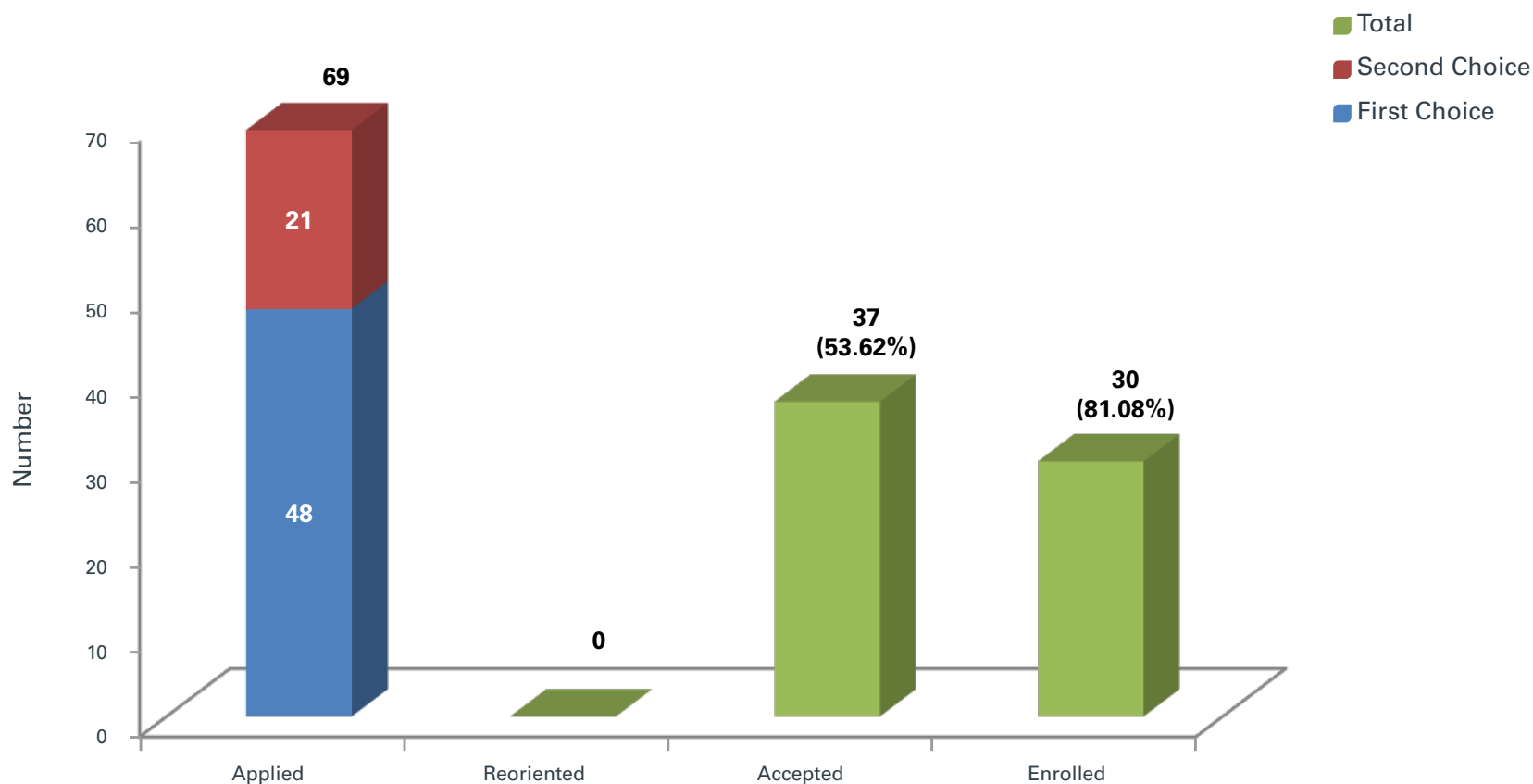


N.B. % Accepted is out of Total Applied and Reoriented
% Enrolled is out of Total Accepted

NDU First Time Entering Undergraduates by Faculty - Fall 2022

FACULTY OF
LAW &
POLITICAL
SCIENCE

FLPS

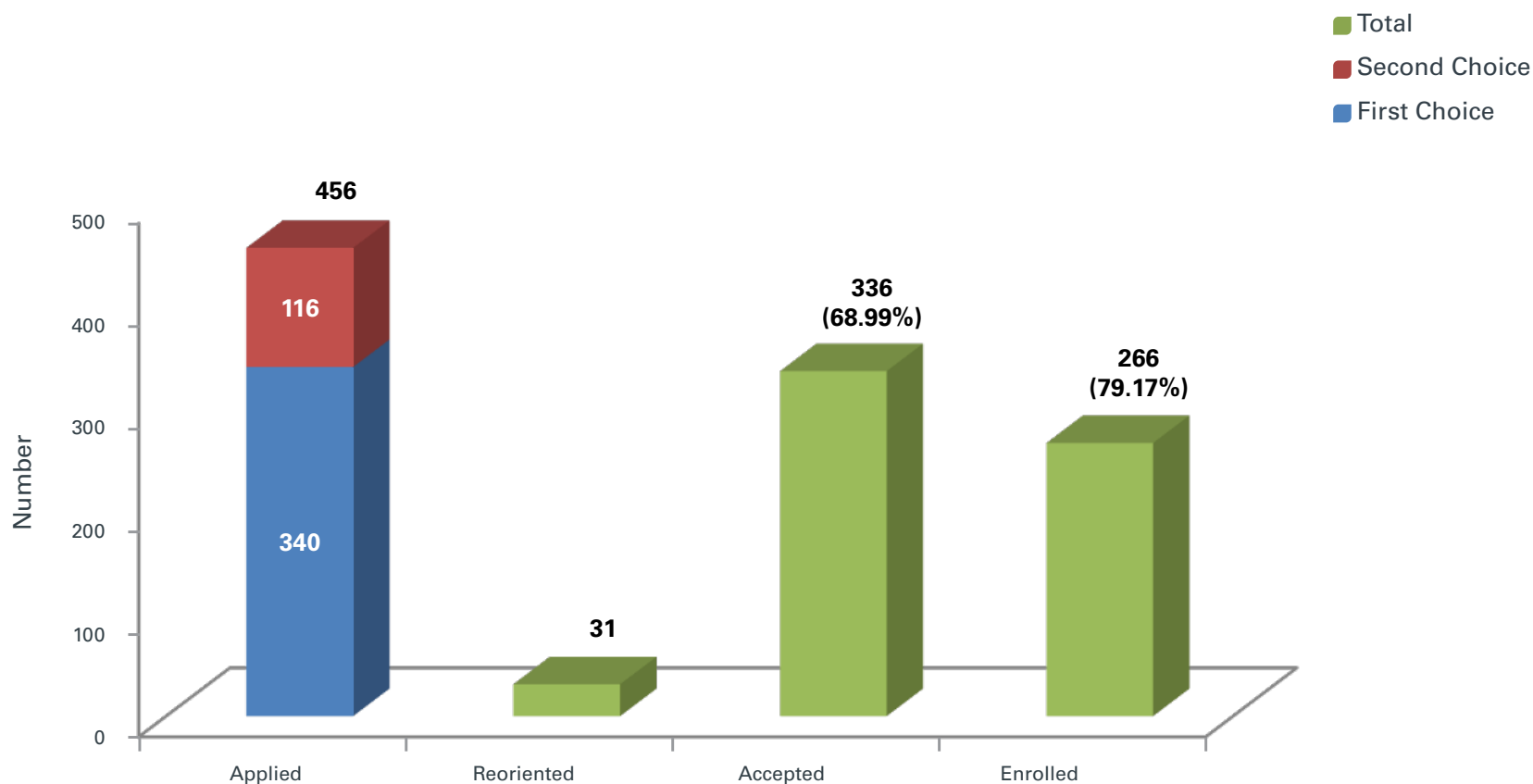


N.B. % Accepted is out of Total Applied and Reoriented
% Enrolled is out of Total Accepted

NDU First Time Entering Undergraduates by Faculty - Fall 2022

FACULTY OF
NATURAL &
APPLIED
SCIENCES

FNAS

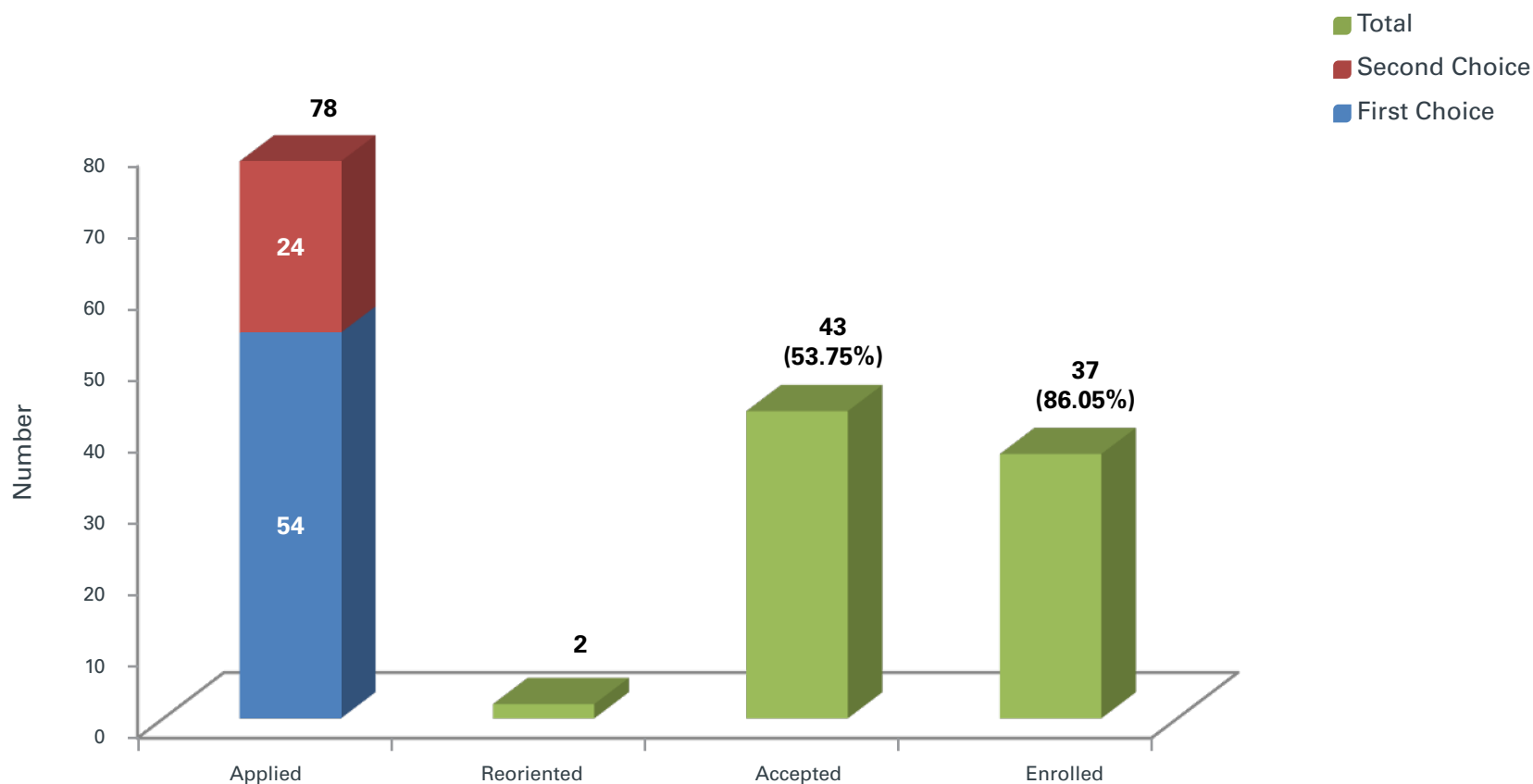


N.B. % Accepted is out of Total Applied and Reoriented
% Enrolled is out of Total Accepted

NDU First Time Entering Undergraduates by Faculty - Fall 2022

FACULTY OF
NURSING &
HEALTH
SCIENCES

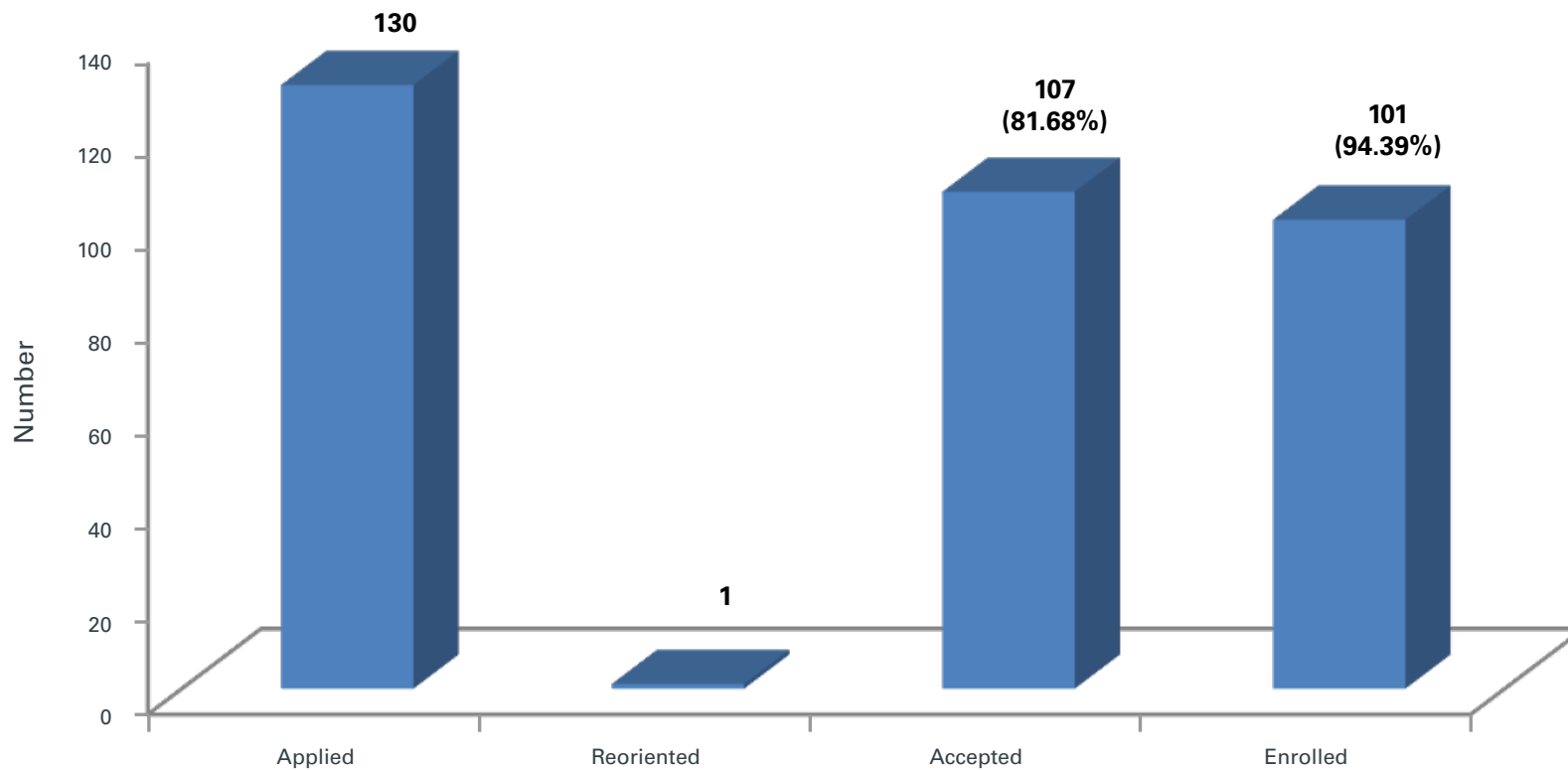
FNHS



N.B. % Accepted is out of Total Applied and Reoriented
% Enrolled is out of Total Accepted

NDU First Time Entering Undergraduates by Faculty - Fall 2022 Continued

Undeclared Faculty

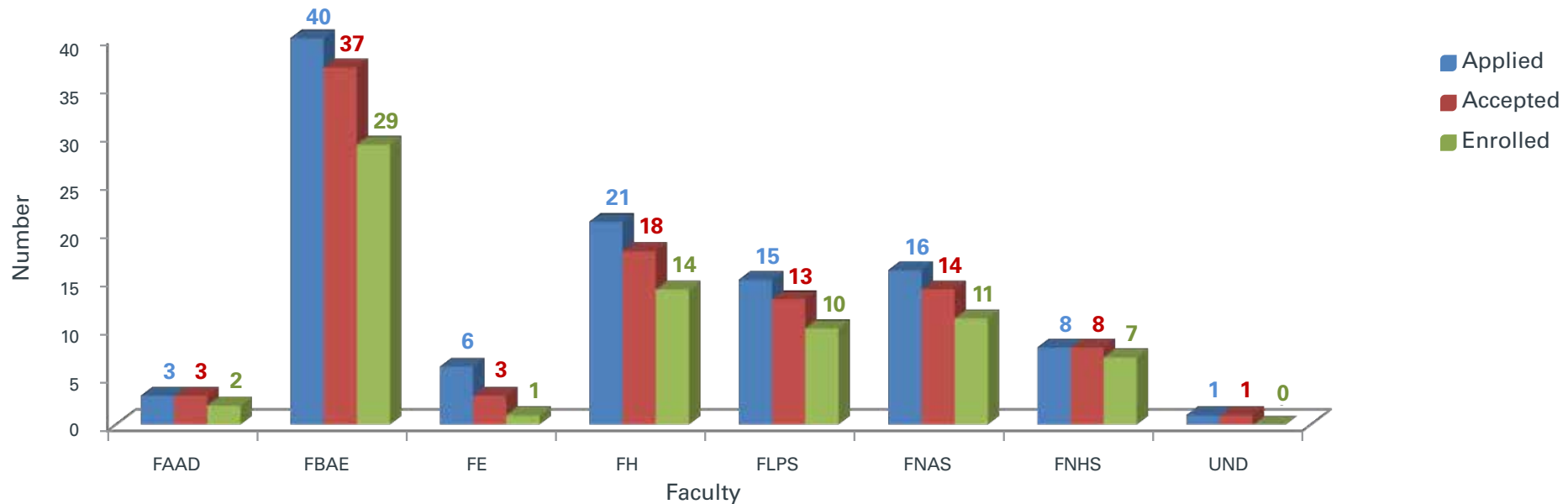


N.B. % Accepted is out of Total Applied and Reoriented
% Enrolled is out of Total Accepted

Graduate Admission by Faculty - Fall 2022

Faculty	Applied	Accepted	Enrolled	% Accepted out of Applied	% Enrolled out of Accepted
FAAD	3	3	2	100.00%	66.67%
FBAE	40	37	29	92.50%	78.38%
FE	6	3	1	50.00%	33.33%
FH	21	18	14	85.71%	77.78%
FLPS	15	13	10	86.67%	76.92%
FNAS	16	14	11	87.50%	78.57%
FNHS	8	8	7	100.00%	87.50%
UND	1	1	0	100.00%	0.00%
Total	110	97	74	88.18%	76.29%

N.B. "Undeclared" are students accepted in graduate studies on probation.



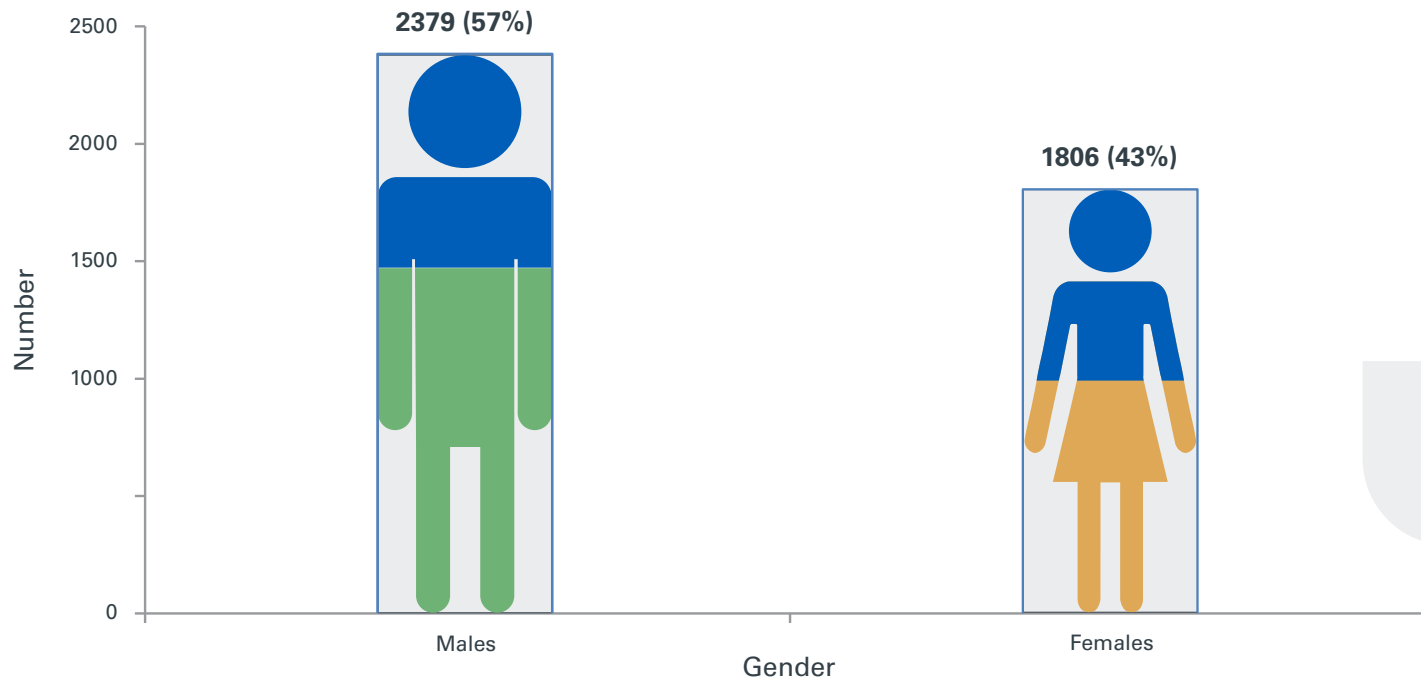


ENROLLMENT

Demographic Data of Enrolled NDU Students - Fall 2022

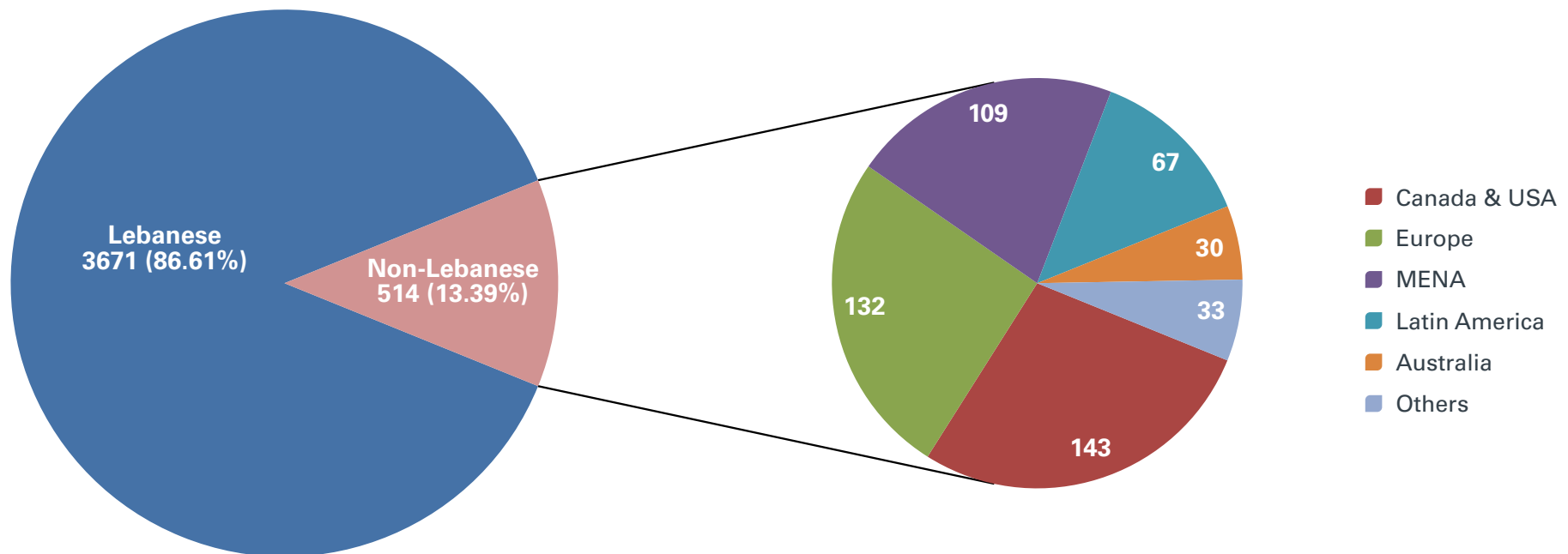
Enrollment by Level and Gender - Fall 2022

Level	Males		Females		Total
	N	%	N	%	
Freshman	84	60%	55	40%	139
Undergraduate	2194	58%	1583	42%	3777
Graduate	95	38%	157	62%	252
Teaching Diploma	2	25%	6	75%	8
IDEAL	4	44%	5	56%	9
Total	2379	57%	1806	43%	4185



Enrollment by Level and Nationality - Fall 2022

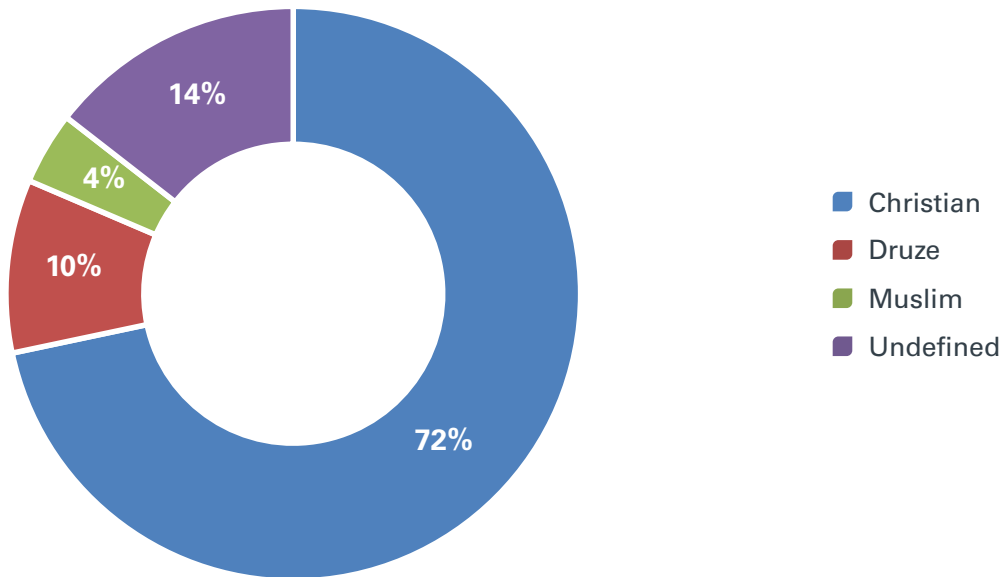
Level	Lebanon		MENA		Canada & USA		Latin America		Europe		Australia		Others		Total
	N	%	N	%	N	%	N	%	N	%	N	%	N	%	
Freshman	73	52.52%	13	9.35%	19	13.67%	12	8.63%	14	10.07%	2	1.44%	6	4.32%	139
Undergraduate	3354	88.80%	87	2.30%	116	3.07%	53	1.40%	113	2.99%	27	0.71%	27	0.71%	3777
Graduate	228	90.48%	9	3.57%	7	2.78%	2	0.79%	5	1.98%	1	0.40%	0	0.00%	252
Teaching Diploma	7	87.50%	0	0.00%	1	12.50%	0	0.00%	0	0.00%	0	0.00%	0	0.00%	8
IDEAL	9	100.00%	0	0.00%	0	0.00%	0	0.00%	0	0.00%	0	0.00%	0	0.00%	9
Total	3671	87.72%	109	2.60%	143	3.42%	67	1.60%	132	3.15%	30	0.72%	33	0.79%	4185





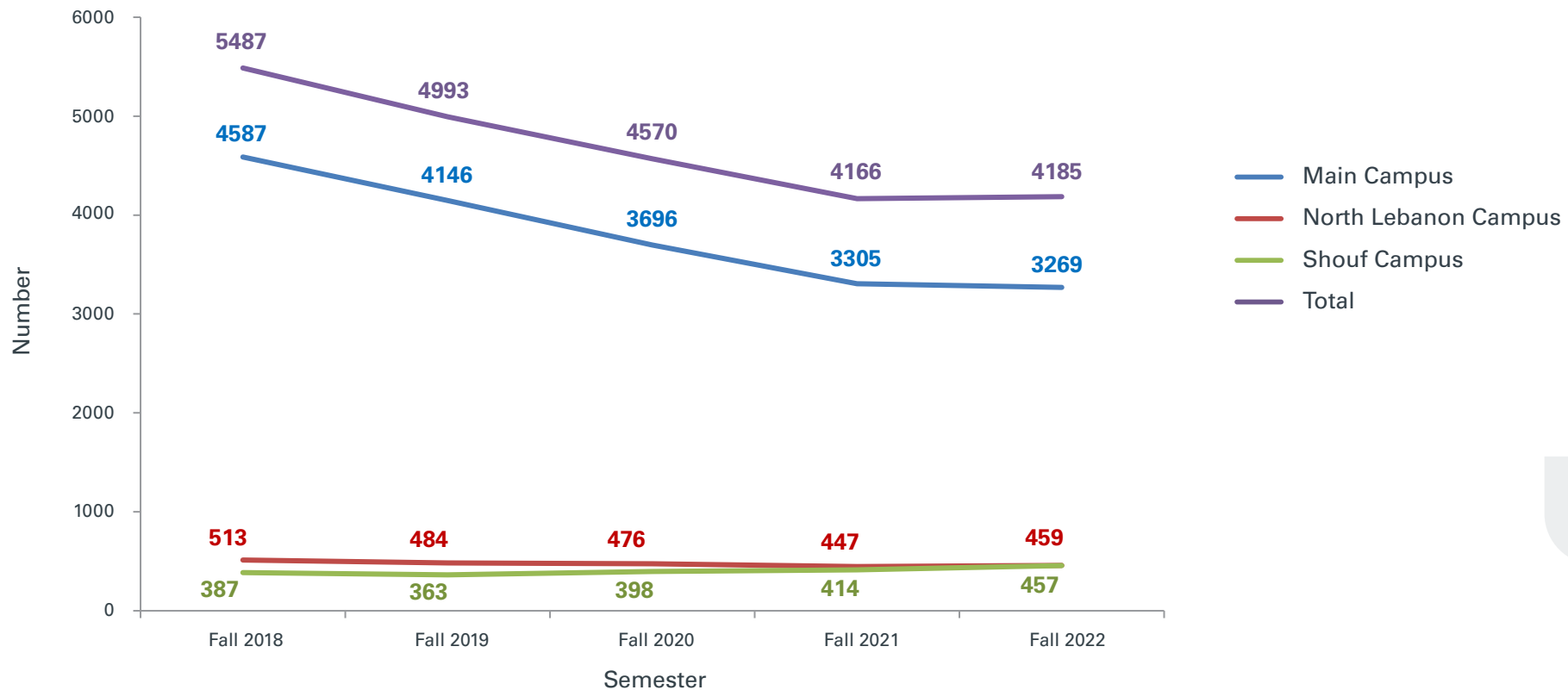
Enrollment by Religion - Fall 2022

Religion	Number of students	
	N	%
Christian	3000	72%
Druze	408	10%
Muslim	171	4%
Undefined	606	14%
Total	4185	100%



Enrollment by Campus (Fall 2018-Fall 2022)

Campus	Fall 2018	Fall 2019	Fall 2020	Fall 2021	Fall 2022
Main Campus	4587	4146	3696	3305	3269
North Lebanon Campus	513	484	476	447	459
Shouf Campus	387	363	398	414	457
Total	5487	4993	4570	4166	4185



Enrollment by Campus and Level (Fall 2018-Fall 2022)

Campus	Level	Fall 2018	Fall 2019	Fall 2020	Fall 2021	Fall 2022
Main Campus	Undergraduate	4257	3814	3424	3025	3000
	Graduate	326	321	266	266	252
	Teaching Diploma	4	11	6	14	8
	IDEAL	-	-	-	-	9
North Lebanon Campus	Undergraduate	503	477	472	446	459
	Graduate	10	7	4	1	0
Shouf Campus	Undergraduate	376	361	398	413	457
	Graduate	11	2	0	1	0
Total		5487	4993	4570	4166	4185

Enrollment by Faculty and Level - Fall 2022

Faculty	Level			Total
	Undergraduate	Graduate	Teaching Diploma	
Ramez G. Chagoury Faculty of Architecture, Arts and Design	429	8	0	437
Faculty of Business Administration and Economics	1069	99	0	1168
Faculty of Engineering	756	8	0	764
Faculty of Humanities	512	60	8	580
Faculty of Law and Political Science	123	24	0	147
Faculty of Natural and Applied Sciences	717	29	0	746
Faculty of Nursing and Health Sciences	163	22	0	185
Undeclared Faculty	147	2	0	149
Total	3916	252	8	4176



Enrollment by Program - Fall 2022

RAMEZ G. CHAGOURY, FACULTY OF ARCHITECTURE, ARTS & DESIGN	Level	Major	Main Campus	North Lebanon Campus	Shouf Campus
	Undergraduate	Bachelor of Architecture	144	30	44
		BA in Fashion Design	45	0	0
		BA in Graphic Design	72	0	29
		BA in Interior Design	50	14	0
		BA in Music & Musicology - Musimedialogy	1	0	0
		Total	312	44	73
	Graduate	Master of Architecture-Sustainable Architecture	2	0	0
		Master of Architecture-Urban Design	6	0	0
		Total	8	0	0
	Total FAAD		320	44	73

**FACULTY OF
BUSINESS
ADMINISTRATION &
ECONOMICS**

Level	Major	Main Campus	North Lebanon Campus	Shouf Campus
Undergraduate	Bachelor of Business Administration	57	30	0
	Bachelor of Hotel Management & Tourism	117	1	0
	BBA - Entrepreneurship	11	0	0
	BBA in Accounting	44	5	2
	BBA in Banking & Finance	87	11	18
	BBA in Distribution & Logistics Management	37	0	0
	BBA in Financial Engineering	170	21	30
	BBA in Human Resource Management	26	4	16
	BBA in International Business Management	182	16	37
	BBA in Marketing	96	6	23
	BS in Economics	18	4	0
	Total	845	98	126
Graduate	Master of Business Administration	49	0	0
	Master of Science in Business Strategy	28	0	0
	Master of Science in Financial Risk Management	22	0	0
	Total	99	0	0
Total FBAE		944	98	126



FACULTY OF ENGINEERING	Level	Major	Main Campus	North Lebanon Campus	Shouf Campus
	Undergraduate	BE in Chemical Engineering	47	2	1
		BE in Civil Engineering	101	34	0
		BE in Computer & Communication Engineering	127	41	53
		BE in Electrical Engineering	39	18	8
		BE in Mechanical Engineering	190	48	8
		BE in Petroleum Engineering	35	4	0
		Total	539	147	70
	Graduate	MS in Civil Engineering	7	0	0
		MS in Electrical & Computer Engineering	1	0	0
		Total	8	0	0
	Total FE		547	147	70

FACULTY OF HUMANITIES	Level	Major	Main Campus	North Lebanon Campus	Shouf Campus
	Undergraduate	BA in Advertising & Marketing	134	31	23
		BA in Communication Arts	107	14	0
		BA in Education - Basic Education	10	0	0
		BA in English Language	8	0	0
		BA in Physical Education & Sport	67	0	0
		BA in Psychology	94	0	7
		BA in Translation & Interpretation	17	0	0
		Total	437	45	30
	Teaching Diploma	Teaching Certificate	1	0	0
		Teaching Diploma	7	0	0
		Total	8	0	0
	Graduate	MA in Education	15	0	0
		MA in English Language & Literature	1	0	0
		MA in Media Studies	25	0	0
		MA in Psychology-Educational Psychology	13	0	0
		MA in Translation	6	0	0
		Total	60	0	0
	Total FH		505	45	30

**FACULTY OF LAW
& POLITICAL
SCIENCE**

Level	Major	Main Campus	North Lebanon Campus	Shouf Campus
Undergraduate	BA in International Affairs & Diplomacy	47	0	0
	BA in Political Science	3	0	0
	BA in Political Science - Euro-Mediterranean Studies	1	0	0
	Bachelor of Laws	72	0	0
	Total	123	0	0
Graduate	MA in International Affairs & Diplomacy	15	0	0
	MA in Political Science	8	0	0
	MA in Public Administration	1	0	0
	Total	24	0	0
Total FLPS		147	0	0





FACULTY OF NATURAL & APPLIED SCIENCES

Level	Major	Main Campus	North Lebanon Campus	Shouf Campus
Undergraduate	BS in Actuarial Sciences	37	0	0
	BS in Biology	34	13	20
	BS in Business Computing - Management Information Systems	42	6	0
	BS in Biochemistry	7	0	0
	BS in Chemistry	4	0	0
	BS in Computer Science	211	47	55
	BS in Computer Science - Computer Graphics & Animation	69	0	5
	BS in Computer Science - Information Technology	50	14	14
	BS in Environmental Science	14	0	0
	BS in Geographic Information Systems	1	0	0
	BS in Mathematics	32	1	1
	BS in Physics	18	8	14
	Total	519	89	109
Graduate	MS in Actuarial Sciences	6	0	0
	MS in Biology	6	0	0
	MS in Computer Science	11	0	0
	MS in Industrial Chemistry	0	0	0
	MS in Mathematics	6	0	0
	Total	29	0	0
Total FNAS		548	89	109

**FACULTY OF
NURSING &
HEALTH SCIENCES**

Level	Major	Main Campus	North Lebanon Campus	Shouf Campus
Undergraduate	Bachelor of Nursing	24	0	0
	BS in Food Safety & Quality Management	15	0	1
	BS in Medical Laboratory Technology	20	19	26
	BS in Nutrition & Dietetics	41	10	6
	BS in Nutrition & Dietetics with CP	1	0	0
	Total	101	29	33
Graduate	MS in Food Safety & Quality Management	16	0	0
	MS in Human Nutrition	6	0	0
	Total	22	0	0
Total FNHS		123	29	33



UNDECLARED FACULTY	Level	Major	Main Campus	North Lebanon Campus	Shouf Campus
	Undergraduate	Undeclared	124	7	16
	Graduate	Undeclared	2	0	0
	Total Undeclared		126	7	16
IDEAL	Total IDEAL		9	0	0
	Total NDU		3269	459	457

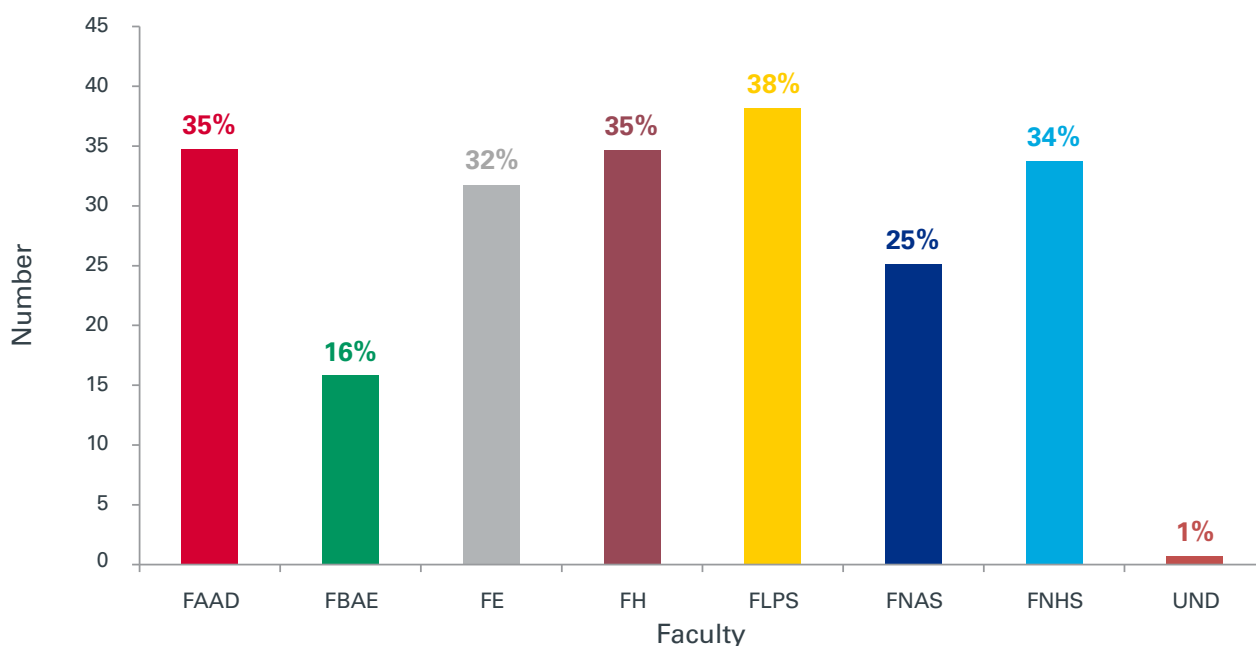
Enrollment for Degree Seeking and Non-Degree Seeking Students by Headcount, Credit Hours and FTE - Fall 2022

Degree Seeking Students	Headcount			Credit Hours			FTE		
	Full Time	Part Time	Total	Full Time	Part Time	Total	Full Time	Part Time	Total
Freshman	126	13	139	1,814	102	1,916	151.17	8.50	159.67
Undergraduate	3,411	356	3,767	48,720	2,628	51,348	4,060.00	219.00	4,279.00
Graduate	93	159	252	867	883	1,750	96.33	98.11	194.44
Teaching Diploma	1	7	8	12	57	69	1.33	6.33	7.67
Degree Seeking Students Total	3,631	535	4,166	51,413	3,670	55,083	4,309	332	4,640.78

Non-Degree Seeking Students	Headcount			Credit Hours			FTE		
	Full Time	Part Time	Total	Full Time	Part Time	Total	Full Time	Part Time	Total
Undergraduate	8	2	10	114	9	123	9.50	0.75	10.25
Graduate	0	0	0	0	0	0	0	0	0.00
IDEAL	0	9	9	0	27	27	0	2.25	2.25
Non-Degree Seeking Students Total	8	11	19	114	36	150	9.50	3	12.50

Enrolled Degree Seeking Undergraduate Students on Dean's List - Fall 2022

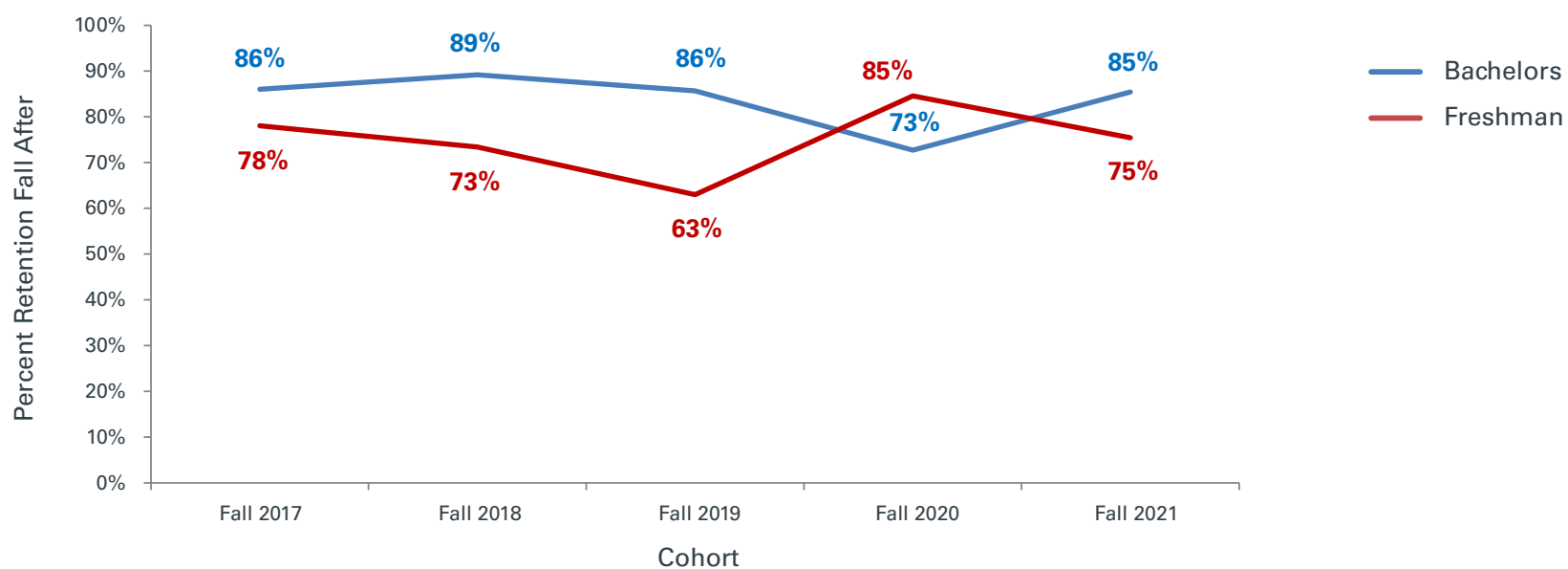
Faculty	Headcount	Dean's List	% on Dean's List
Ramez G. Chagoury Faculty of Architecture, Arts and Design	429	149	35%
Faculty of Business Administration and Economics	1069	169	16%
Faculty of Engineering	756	240	32%
Faculty of Humanities	511	177	35%
Faculty of Law and Political Science	123	47	38%
Faculty of Natural and Applied Sciences	717	180	25%
Faculty of Nursing and Health Sciences	163	55	34%
Undeclared Faculty	138	1	1%
Total	3906	1018	26%



Fall to Fall Retention - First Time Degree Seeking Students (2017-2022)

	Cohort of Fall 2017		Cohort of Fall 2018		Cohort of Fall 2019		Cohort of Fall 2020		Cohort of Fall 2021	
	Enrolled	Retention Rate	Enrolled	Retention Rate	Enrolled	Retention Rate	Enrolled	Retention Rate	Enrolled	Retention Rate
Bachelors	918	86%	713	89%	767	86%	772	73%	680	85%
Freshman	123	78%	109	73%	105	63%	66	85%	53	75%
Total	1041	85%	822	87%	872	83%	838	84%	733	85%

N.B. Retention Rate is the percentage of degree-seeking students, registered for the first time in a Fall cohort and enrolled again during the next Fall.



Fall to Fall Retention - First Time Degree Seeking Students by Faculty (2017-2022)

	Cohort 2017		Cohort 2018		Cohort 2019		Cohort 2020		Cohort 2021	
	Enrolled	Retention Rate	Enrolled	Retention Rate	Enrolled	Retention Rate	Enrolled	Retention Rate	Enrolled	Retention Rate
Ramez G. Chagoury, Faculty of Architecture, Arts and Design	113	83%	77	92%	59	90%	61	85%	70	87%
Faculty of Business Administration and Economics	266	89%	223	89%	247	83%	246	80%	213	83%
Faculty of Engineering	196	87%	195	92%	164	84%	143	87%	96	93%
Faculty of Humanities	114	85%	67	88%	86	91%	92	87%	82	83%
Faculty of Law and Political Science	29	86%	19	79%	29	86%	36	83%	15	87%
Faculty of Natural and Applied Sciences	162	83%	104	88%	146	86%	151	85%	166	85%
Faculty of Nursing and Health Sciences	38	84%	28	75%	35	89%	43	93%	38	84%
Total	918	86%	822	87%	872	83%	838	84%	733	85%

Graduation Rates: Undergraduate Cohorts of 2010-2014

Graduation Data	Cohort 2010	Cohort 2011	Cohort 2012	Cohort 2013	Cohort 2014
(150% of Time)	70.64%	67.85%	65.24%	66.11%	61.20%

Current Methodology for graduation rates (undergraduate students):

First Time students including freshman, excluding cross, special and transfer students.

Fall semester new enrolled students, excluding students enrolled in the spring semester

Normal Program length time in semesters:

For Undergraduate Students:(Number of credits required on student's program sheet/15)

Example (1): Bachelor of Architecture = 172 cr./15 cr. per year~12 semesters (normal program length)

====> $12 * 1.5 = 18$ semesters(150% of program length)

Example (2): Bachelor of Engineering = 150 cr./15 cr. per year~10 semesters (normal program length)

====> $10 * 1.5 = 15$ semesters(150% of program length)

Students' number of semesters spent at NDU = Number of Semesters (excluding summer sessions)-Number of semesters in the Intensive English Course



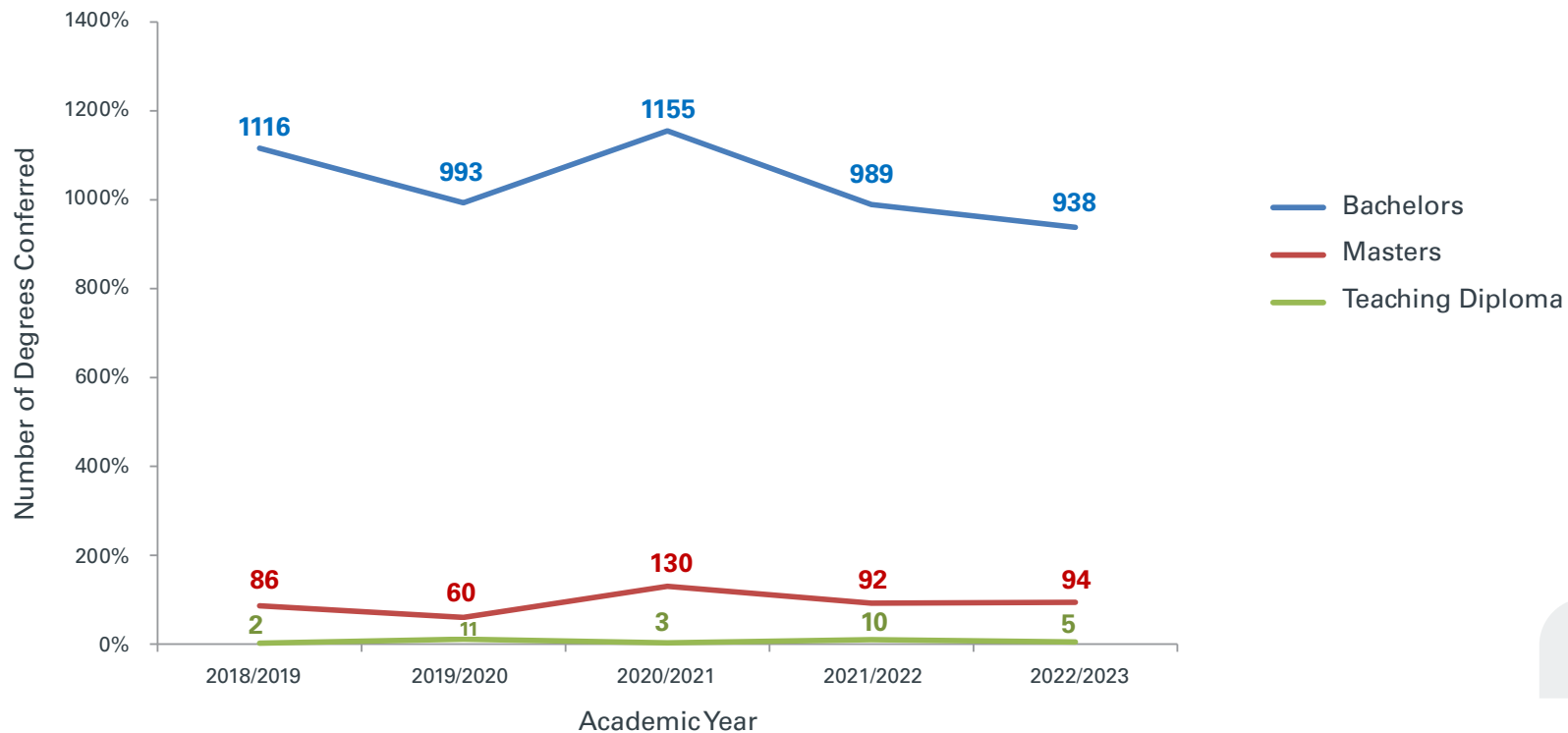
DEGREES CONFERRED

Graduation Class of 2022



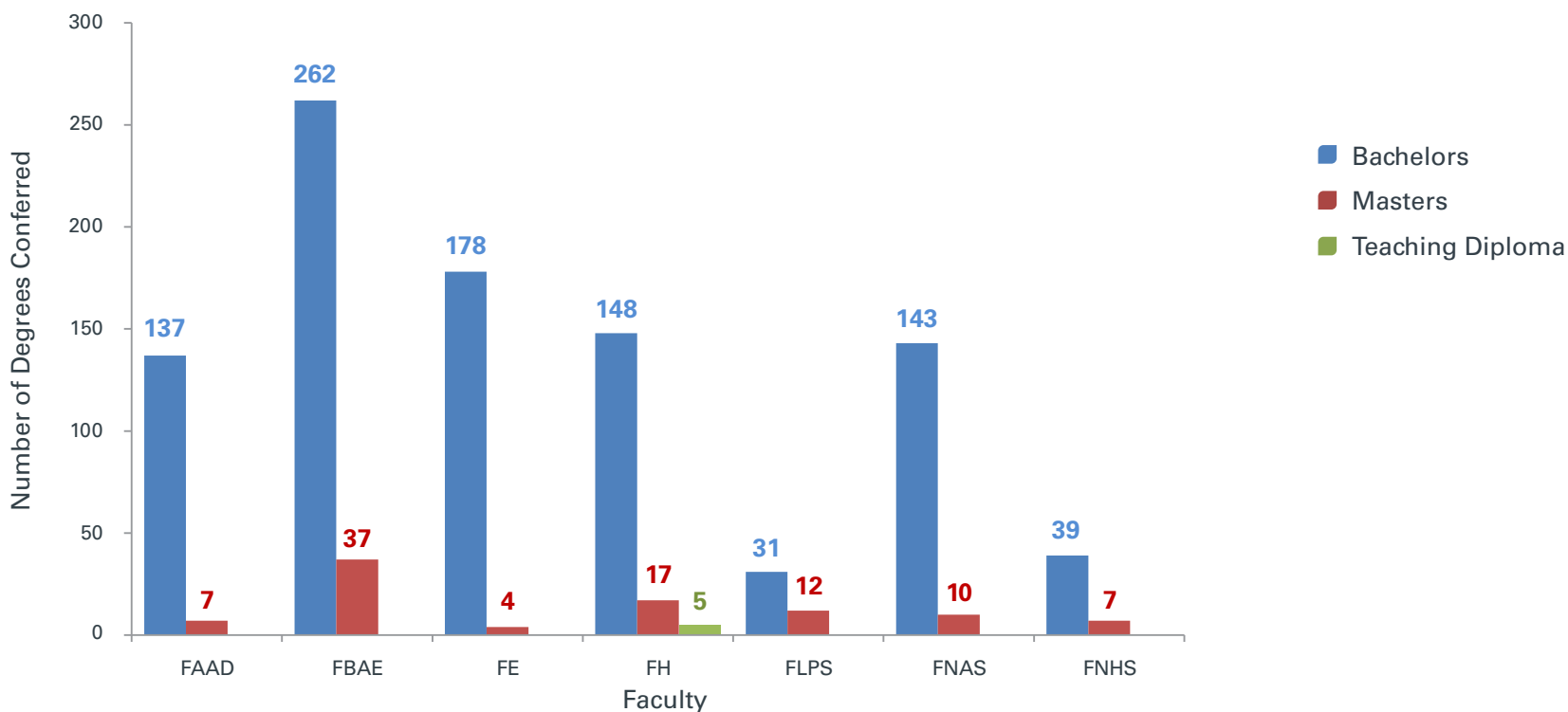
Degrees Conferred by Level - Annual Years 2018-2022

Level	2018/2019	2019/2020	2020/2021	2021/2022	2022/2023
Bachelors	1116	993	1155	989	938
Masters	86	60	130	92	94
Teaching Diploma	2	11	3	10	5
Total	1204	1064	1288	1091	1037



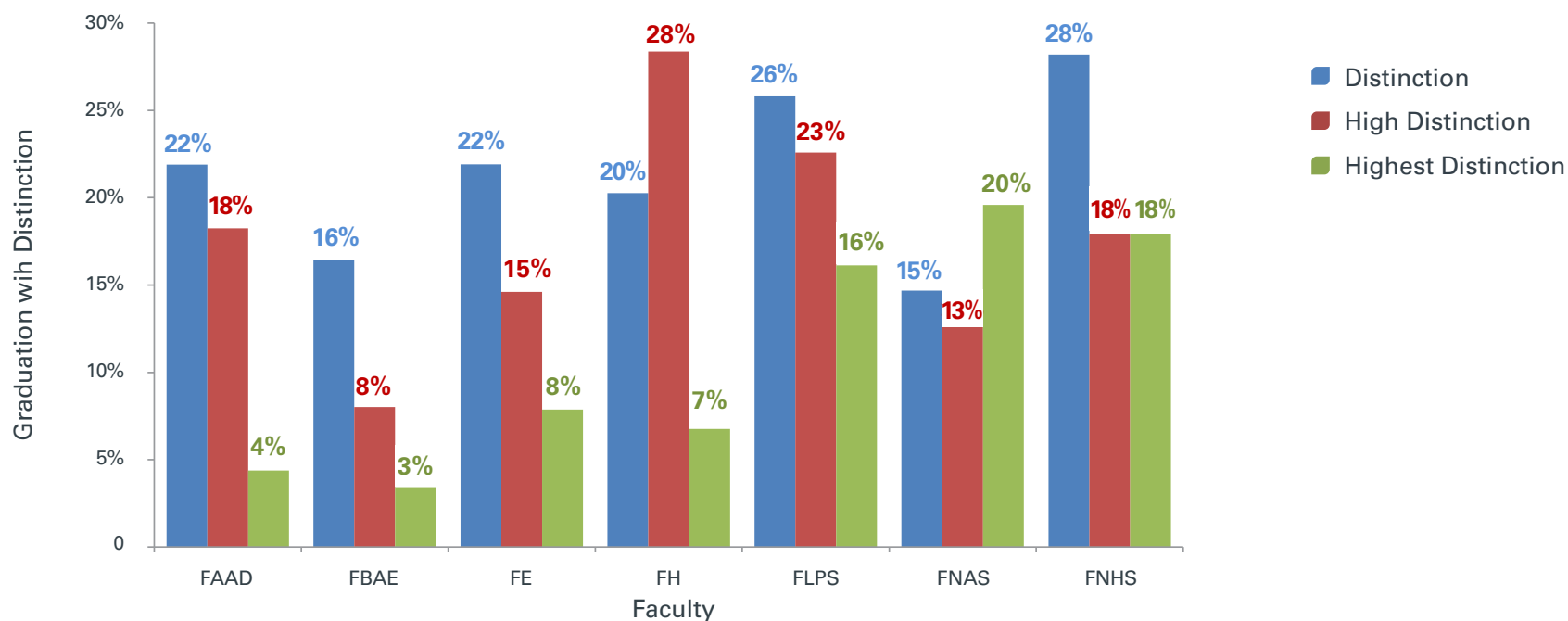
Degrees Conferred by Faculty - Annual Year 2022-2023

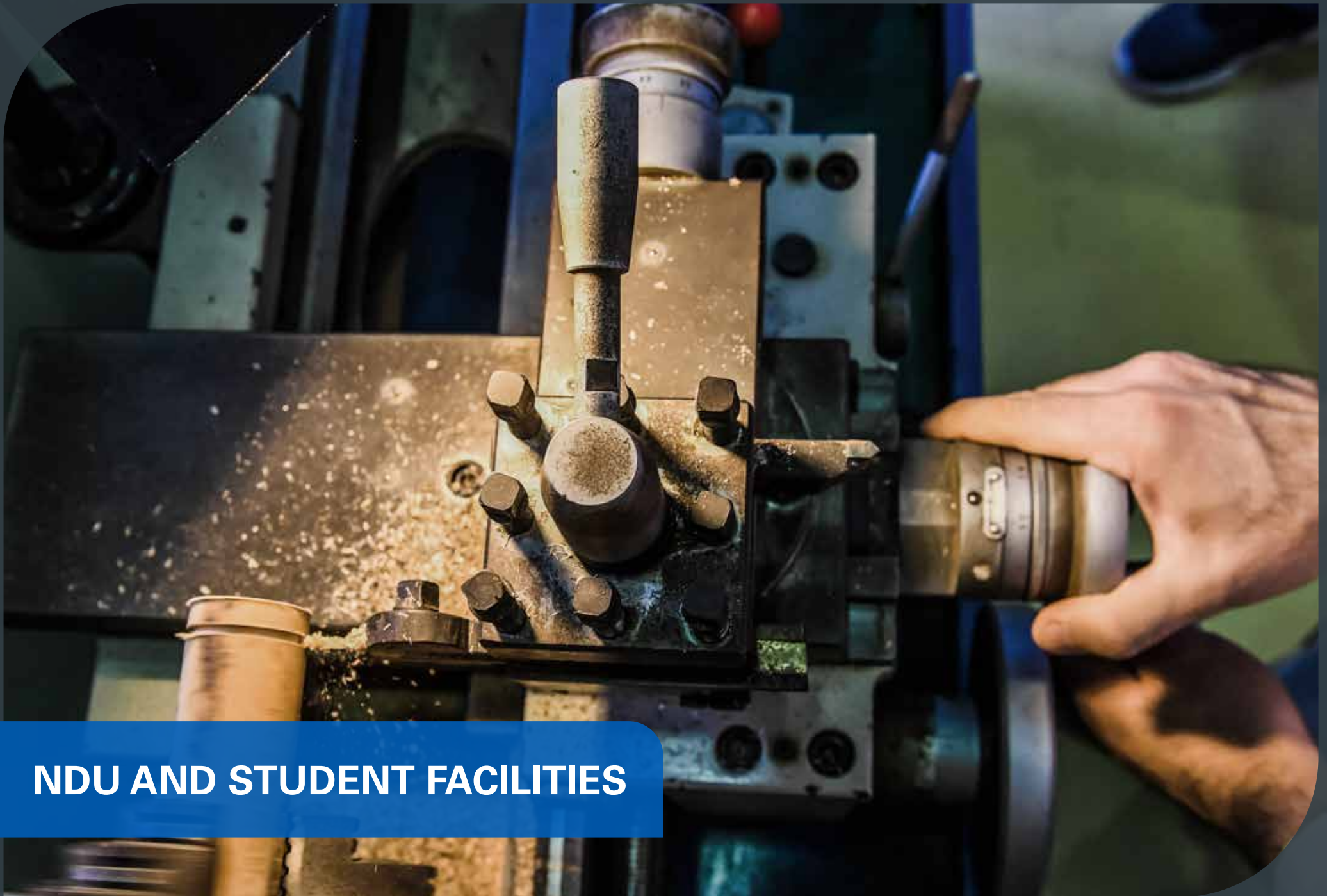
Faculty	Bachelors	Masters	Teaching Diploma
Ramez G. Chagoury Faculty of Architecture, Arts and Design	137	7	-
Faculty of Business Administration and Economics	262	37	-
Faculty of Engineering	178	4	-
Faculty of Humanities	148	17	5
Faculty of Law and Political Science	31	12	-
Faculty of Natural and Applied Sciences	143	10	-
Faculty of Nursing and Health Sciences	39	7	-
Total	938	94	5



Graduation with Distinction - Annual Year 2022-2023

Faculty	Total Graduated	Distinction		High Distinction		Highest Distinction	
		N	%	N	%	N	%
Ramez G. Chagoury, Faculty of Architecture, Arts and Design	137	30	22%	25	18%	6	4%
Faculty of Business Administration and Economics	262	43	16%	21	8%	9	3%
Faculty of Engineering	178	39	22%	26	15%	14	8%
Faculty of Humanities	148	30	20%	42	28%	10	7%
Faculty of Law and Political Science	31	8	26%	7	23%	5	16%
Faculty of Natural and Applied Sciences	143	21	15%	18	13%	28	20%
Faculty of Nursing and Health Sciences	39	11	28%	7	18%	7	18%
Total	938	182	19%	146	16%	79	8%





NDU AND STUDENT FACILITIES

NDU Physical Facilities - Academic Year 2022-2023

Campus	Serviceable Buildings	Serviceable Buildings Area/sqm (000)	Green Area/sqm (000)	Assignable Square Meter (000)	Total Land Area/sqm (000)
Main Campus	20	147.1	17	164.1	244
North Lebanon Campus	5	26.6	5	31.6	50.7
Shouf Campus	1	7.32	2	9.32	76.4



	Assignable Square Meter (000)			
	Main campus	North Lebanon Campus	Shouf Campus	Total
Faculties (class rooms)	33	3.74	1.78	38.52
Academic facilities	6	4.69	0.95	11.64
Library & Research Centers	4.4	3.72	0.26	8.38
Administration	2.15	1.83	0.28	4.26
Admission & SAO	2.35	1.36	0.53	4.24
Sport Facilities	9.5	0.15	0	9.65
Parking	47	3.46	2	52.46
Restaurant	5	0.21	0.16	5.37
Green areas	17	5	2	24
Corridors	7.5	3.77	1.05	12.32
LLC	4	0	0	4
Theater	3.2	2.2	0	5.4
Dormitories	13.6	1	0	14.6
Warehouse	3.6	0.48	0.32	4.4
St Rita/ NDU Incubator	5.8	0	0	5.8
Total	164.1	31.6	9.32	205.02

Centers and Institutes

- Center for Applied Research in Education (CARE)
- Center for Digitization and Preservation (CDP)
- Lebanese Emigration Research Center (LERC)
- Center for Research on Sustainable Development (CROSD)
- Institute of Lebanese Thought (ILT)
- Institute for Internet and Technology Addiction (INTA)
- Writing Center
- Tutoring Center
- The Benedict XVI Endowed Chair of Religious, Cultural, and Philosophical Studies
- NDU International Film Festival
- Lifelong Learning Center (LLC)





Student Housing - Academic Year 2022-2023

Fall 2022

Dorms		Number of Rooms		Occupancy	
		Single	Shared	Single	Shared
Block A	Females	35	13	0	0
Block B	Females	18	138	18	61
Block C	Males	19	194	21	57

Spring 2023

Dorms	Occupancy	Number of Rooms		Occupancy	
		Single	Shared	Single	Shared
Block A	Females	35	13	0	0
Block B	Females	18	138	13	64
Block C	Males	19	194	20	55



Summer 2023

Dorms		Number of Rooms		Occupancy	
		Single	Shared	Single	Shared
Block A	Females	35	13	0	0
Block B	Females	18	138	7	30
Block C	Males	19	194	6	27



Dorm Fees for the Academic Year 2022-2023 by Semester and Accommodation:

Block B (Females) & C (Males)	Fall / Spring	Summer
Single accommodation	USD 1500	USD 550
Shared accommodation	USD 1000	USD 350

* The deposit for single accommodation is USD 300.

* The deposit for shared accommodation is USD 200.



NDU Libraries

Library Collections for Books - Academic Years 2018-02023

	2018-2019	2019-2020	2020-2021	2021-2022	2022-2023
Print Titles (excluding periodicals)	112,468	116,323	113,903	113,725	114,110
Electronic Book Titles (perpetual access)	99,283	109,982	109,982	111,217	126,300
Electronic Book Titles (subscription-based access)	364,725	385,108	1,361	209,904	263,052

Library Collections for Periodicals and Databases - Academic Years 2018-2023

Subscriptions		2018-2019	2019-2020	2020-2021	2021-2022	2022-2023
Print Periodicals	Mariam & Youssef (Main) Library	43	0	0	0	0
	NLC Library	17	0	0	0	0
	Shouf Library	7	5	0	0	0
	Total	67	5	0	0	0
Databases		111	77	82	77	82
Electronic Periodical (Perpetual Access)		29	0	0	0	0

Number of Library Staff per Campus - Academic Year 2022-2023

Library Staff	Main Campus	North Lebanon Campus	Shouf Campus
Librarians	0	0	0
Other Staff	19	2	1
Total	19	2	1



Information Technology Resources - Academic Year 2022-2023

Information Technology Resources

Course Management System

Number of classes using the system	1244
Number of students (having seats) on system	20,911

Bandwidth

On-Campus Network	1 Gbps
Off-Campus Access – Commodity Internet	700 Mbps
Wireless Protocol(s)	ieee Standard 802.11

Network

Percent of residence halls connected to network	
Wired	1%
Wireless	99%
Percent of classrooms connected to network	
Wired	100%
Wireless	





Multimedia Classrooms

Main Campus	50
North Lebanon Campus	30
Shouf Campus	2

Smart Classrooms

Main Campus	65
North Lebanon Campus	4
Shouf Campus	19

Computer Connected to Network

Main Campus	1200
North Lebanon Campus	275
Shouf Campus	148

IT Personnel (FTE)

Main campus	17
North Lebanon Campus	1
Shouf Campus	2



Software System and Versions

Student Information System (Registrar, Admissions, Student Affairs Office, Alumni)	SIS (In House Software)
Financial Software	PIMS II Accounting (2310-1503-22.05.24)
Human Resources	PIMS II Payroll (2333-1646-22.11.02) Time Management System (V6.8.186s) Hand Pro Communication (3.9.11)
Library	OLIB 9 SP5 Oracle Database 11g Release 11.2.0.4.0 - 64bit Production
Virtual Learning Environment	Blackboard Version: Learn 9.1 Enterprise License (3800.0.4-rel.9+8bf5305)
Interactive Video Conferencing	Polycom
University Surveys	Blue eXplorance Inc. Version: 8.0.5 Built Number: 8.4.2.31268
Archiving System	Laserfiche (10.1.0.151)



ALUMNI

NDU Student Clubs by Campus - Academic Year 2022-2023

Main Campus	
180 degrees consulting	Eureka
Accounting and Finance	HTEC (Hospitality Tourism & Events Club)
AIChE (American Institute of Chemical Engineers)	IAA Advertising
Architecture	IEEE (Institute of Electrical and Electronics Engineers)
ASCE (American Society of Civil Engineers)	Live Love NDU
ASHRE (American Society of Heating Refrigerating and Air-Conditioning Engineers)	Marketing and Management
ASME (American Society of Mechanical Engineers)	Music Club
Astronomy Club	NDU Integrity Club
Actuarial Club	Nutrition and Health
Debate Club	Pastorale NDU
Discovery Club	Petroleum Engineering Society
Eco Vibes	Secular Club
Esports and Board games	Social Club



North Lebanon Campus

Architecture & Design Club

IAA Advertising Club

Health Club

Fire Club

Sport's Club

Film Club

Free Will Club

My Club

Music Club

ASCE (American Society of Civil Engineers)

Pastoral Work

ASME (American Society of Mechanical Engineers)

GDSC (Google Developer Student Club)

IEEE (Institute of Electrical and Electronics Engineers)

DMS (Disaster Management Sector)

Shouf Campus

AIE Club

Architecture Club

Engineering Club

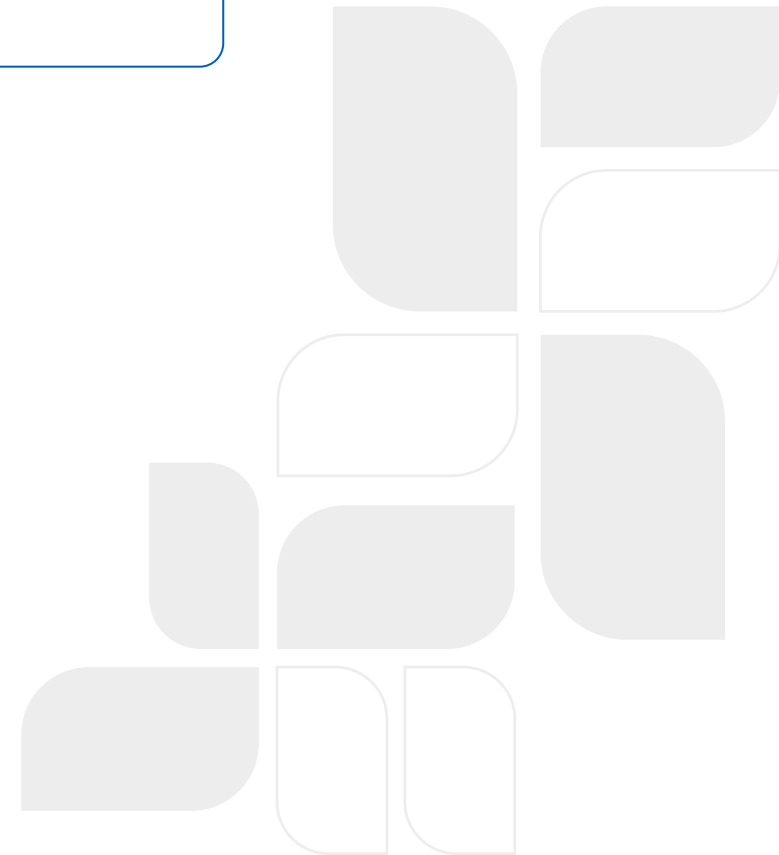
Health Club

Pastoral Work

Graphic Design Club

Music Club

Book Club

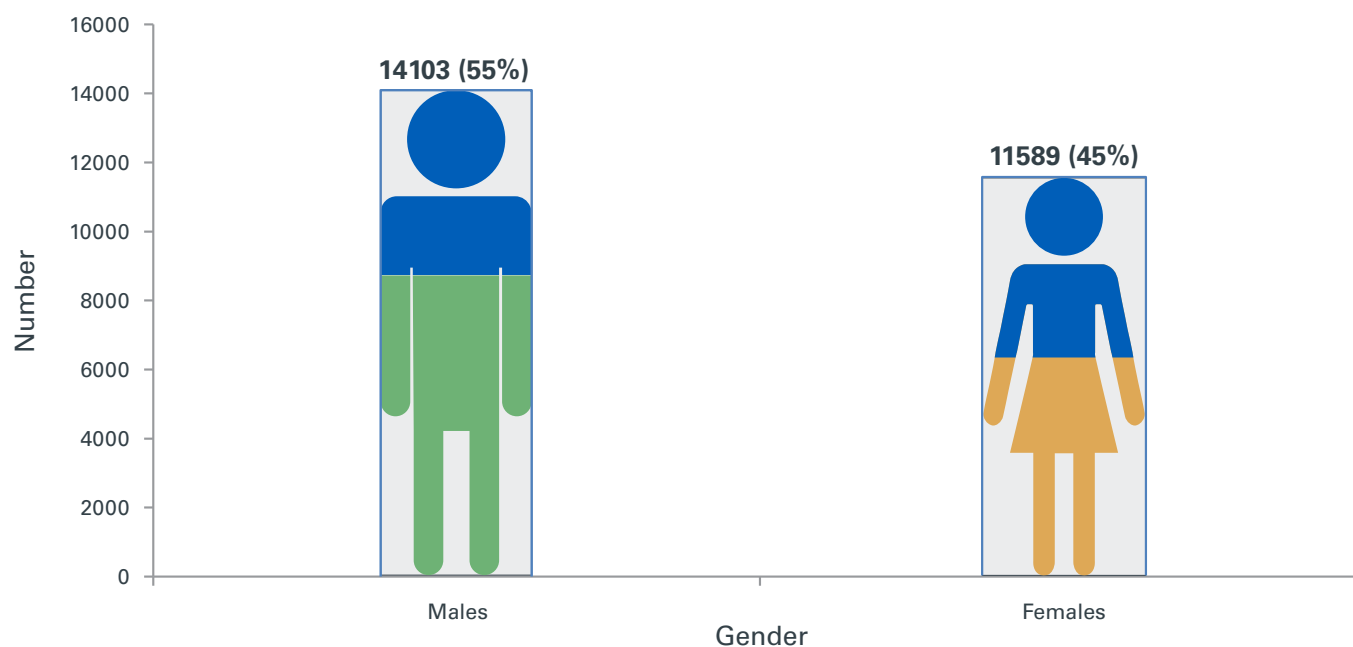


Alumni by Faculty and Campus

Faculty	Main Campus	North Lebanon Campus	Shouf Campus	Total
Ramez G. Chagoury Faculty of Architecture, Arts and Design	2385	181	178	2744
Faculty of Business Administration and Economics	7440	776	394	8610
Faculty of Engineering	3959	354	149	4462
Faculty of Humanities	4628	215	167	5010
Faculty of Law and Political Science	734	12	0	746
Faculty of Natural and Applied Sciences	2727	325	338	3390
Faculty of Nursing and Health Sciences	507	107	116	730
Total	22380	1970	1342	25692

Alumni By Faculty and Gender

Faculty	Males		Females		Total
	N	%	N	%	
Ramez G. Chagoury Faculty of Architecture, Arts and Design	1155	42%	1589	58%	2744
Faculty of Business Administration and Economics	4968	58%	3642	42%	8610
Faculty of Engineering	3675	82%	787	18%	4462
Faculty of Humanities	1707	34%	3303	66%	5010
Faculty of Law and Political Science	276	37%	470	63%	746
Faculty of Natural and Applied Sciences	2261	67%	1129	33%	3390
Faculty of Nursing and Health Sciences	61	8%	669	92%	730
Total	14103	55%	11589	45%	25692



Alumni By Faculty and Level

Faculty	Bachelors	Masters	Teaching Diploma	Total
Ramez G. Chagoury Faculty of Architecture, Arts and Design	2664	80	0	2744
Faculty of Business Administration and Economics	7525	1085	0	8610
Faculty of Engineering	4441	21	0	4462
Faculty of Humanities	4466	399	145	5010
Faculty of Law and Political Science	597	149	0	746
Faculty of Natural and Applied Sciences	3113	277	0	3390
Faculty of Nursing and Health Sciences	635	95	0	730
Total	23441	2106	145	25692



FACULTY MEMBERS & STAFF

Faculty Members by Status, Gender and Faculty - Fall 2022

Faculty	Full-Time					Part-Time				
	Males		Females		Total	Males		Females		Total
	N	%	N	%		N	%	N	%	
Ramez G. Chagoury Faculty of Architecture, Arts and Design	13	58%	12	48%	25	17	43%	23	58%	40
Faculty of Business Administration and Economics	16	57%	12	43%	28	8	50%	8	50%	16
Faculty of Engineering	28	76%	9	24%	37	25	66%	13	34%	38
Faculty of Humanities	25	58%	18	42%	43	29	36%	52	64%	81
Faculty of Law and Political Science	6	100%	0	0%	6	8	42%	11	58%	19
Faculty of Natural and Applied Sciences	22	52%	20	48%	42	22	40%	33	60%	55
Faculty of Nursing and Health Sciences	2	17%	10	83%	12	2	10%	19	90%	21
Total	112	58%	81	42%	193	111	41%	159	59%	270

N.B. The total number of part timers teaching in two faculties is counted twice



Total Number of Credits Taught per Faculty by Full-Time and Part-Time Faculty Members - Fall 2022

Faculty	Credits Taught	
	Full-Time	Part-Time
Ramez G. Chagoury Faculty of Architecture, Arts and Design	188	210
Faculty of Business Administration and Economics	282	95
Faculty of Engineering	145.5	214.5
Faculty of Humanities	320	417
Faculty of Law and Political Science	27	88
Faculty of Natural and Applied Sciences	230.32	381.66
Faculty of Nursing and Health Sciences	71.5	84.5

N.B.:

- Numbers do not include workload of Internship, Senior Project, Thesis, Research Project, Practicum and sections with 3 students or less.
- The above statistics exclude Deleted courses, Tutorial-Main, Tutorial-NLC, Tutorial-SC, MIB courses.
- The credits of the courses are divided among instructors when a course is taught by multiple instructors.
- The cross-listed sections are merged into one.

Full-Time Faculty Members by Faculty and Rank - Fall 2022

Faculty	Professor	Associate Professor	Assistant Professor	Senior Lecturer	Lecturer	LabSenior/ Instructor	Total
Ramez G. Chagoury Faculty of Architecture, Arts and Design	0	6	7	9	3	0	25
Faculty of Business Administration and Economics	4	7	14	3	0	0	28
Faculty of Engineering	7	20	2	0	0	8	37
Faculty of Humanities	5	14	14	6	3	1	43
Faculty of Law and Political Science	2	4	0	0	0	0	6
Faculty of Natural and Applied Sciences	7	25	0	4	0	6	42
Faculty of Nursing and Health Sciences	2	3	4	2	0	1	12
Total	27	79	41	24	6	16	193

Staff by Employment Type and Gender - AY 2022-2023

Campus	Gender	Full-Time Staff		Part-Time Staff		Total Staff
		Academic	Administrative	Academic	Administrative	
Main Campus	Males	25	65			90
	Females	81	48	1	1	131
North Lebanon Campus	Males	2	7			9
	Females	8	5			13
Shouf Campus	Males	1	18			19
	Females	7	8			15
Total		124	151	1	1	277

* Academic staff as defined by NEASC is all staff that work under academic affairs.

* Administrative staff is all staff that work under administration, finance, and public affairs and communications.



FINANCIAL INFORMATION

NDU Revenues and Expenditure Fiscal Year 2022/2023

Fiscal Year ends August 31	(FY 2022/2023)	(FY 2021/2022)
Operating Revenues (In 000s)		
Net Student Fees	80.7%	83.0%
Other Revenue	19.3%	17.0%
Total Operating Revenues	100%	100%

Fiscal Year ends August 31	(FY 2022/2023)	(FY 2021/2022)
Operating Expenses		
Personnel	59.2%	41.1%
Event and Activities	1.2%	1.2%
Maintenance	1.8%	2.8%
Supplies, Software and Printing	0.7%	0.6%
Subscription and Accreditation	1.2%	1.0%
Other Operating Expenses	6.8%	12.4%
Depreciation	24.8%	34.5%
Other Expenses	4.3%	6.5%
Total	100.0%	100.0%



ndu.edu.lb

